



ARTSPACE FEED & GRAIN

130 W 3rd St, Loveland, CO, 80537

RESIDENTIAL AND COMMERCIAL LEASING OPPORTUNITIES

Lis & Earl Sethre Residential Wing | Barry Floyd Studio Wing made possible through the generous donation of Teresa & Paul Mueller

artspace

RATIO
□

Artspace Feed & Grain Overview

Artspace redeveloped the iconic Feed & Grain into a **creative-centric, mixed-use property** to complete the Artspace Loveland Arts Campus — the inspiration for the Space to Create Colorado program.

The Feed & Grain provides **nine units of live/work housing** for creatives and their families within the Lis & Earl Sethre Residential Wing; along with **4,000 square feet of sustainable commercial space** for creative entrepreneurs within the Barry Floyd Studio Wing made possible through the generous donation of Teresa & Paul Mueller.

These live/work units are provided to households making **below 120% AMI (Area Median Income)**, with rents subsidized by the Community Revitalization Fund. **Individual and Commercial rents will vary by square footage.**

The completed Artspace Loveland Arts Campus bookends substantial improvements made in downtown Loveland in recent years, fulfilling the community's vision to expand economic opportunities and arts access while **ensuring that Loveland remains a model for artist-led community development in Colorado.**





Loveland Arts Campus

130 and 140 W 3rd St
Loveland, CO, 80537



Walk Score 81

Most errands can be accomplished on foot.



Bike Score 76

Biking is convenient for most trips.

Artspace Loveland Arts Campus

ARTSPACE FEED & GRAIN

Lis & Earl Sethre Residential Wing

Residential

Unit #01

1ST FLOOR

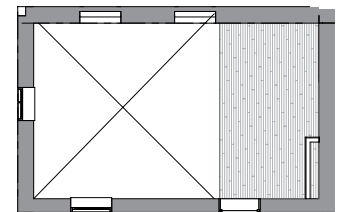
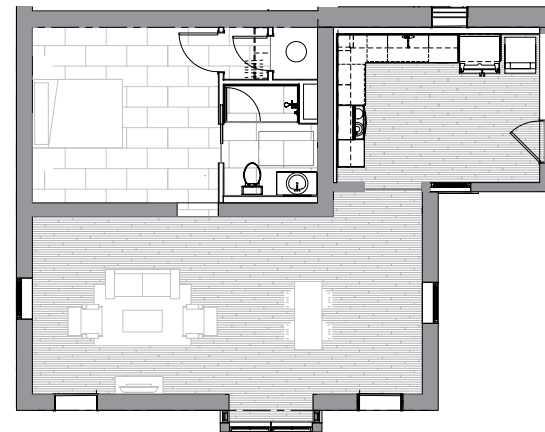
- 1,100 sq. ft.
- 1-bedroom,
1-bathroom unit
- Starting at \$1,850/month
- Hardwood Floors
- Washer-Dryer In-Unit
- Black Stainless
Steel Appliances



UNIT 01 (FIRST FLOOR)

UNIT 01 (LOFT)

FIRST FLOOR



ARTSPACE FEED & GRAIN

Lis & Earl Sethre Residential Wing

Residential

Unit #02

1ST AND 2ND FLOORS

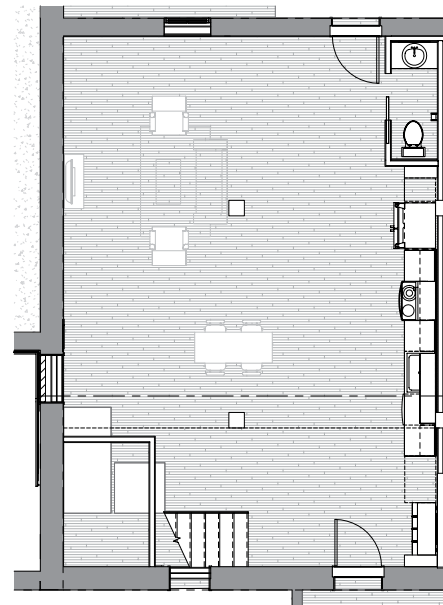


- 1,870 sq. ft.
- 2-bedroom, 2-bath unit
- Starting at \$2,150/month
- Hardwood Floors
- Washer-Dryer In-Unit
- Black Stainless Steel Appliances
- Lofted 2nd Floor Bedroom
- Interior and Exterior Entrances Into Unit

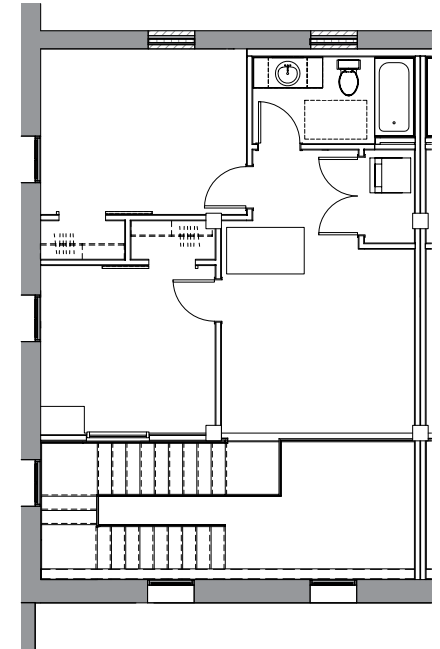
FIRST FLOOR



UNIT 02 (1ST FLOOR)



UNIT 02 (2ND FLOOR)



ARTSPACE FEED & GRAIN

Lis & Earl Sethre Residential Wing

Residential

Unit #03

1ST AND 2ND FLOORS

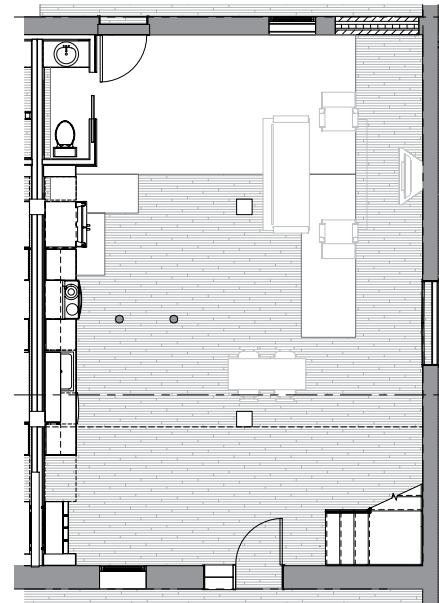
- 1,870 sq. ft.
- 2-bedroom, 2-bath unit
- Starting at \$2,150/month
- Hardwood Floors
- Washer-Dryer In-Unit
- Black Stainless Steel Appliances



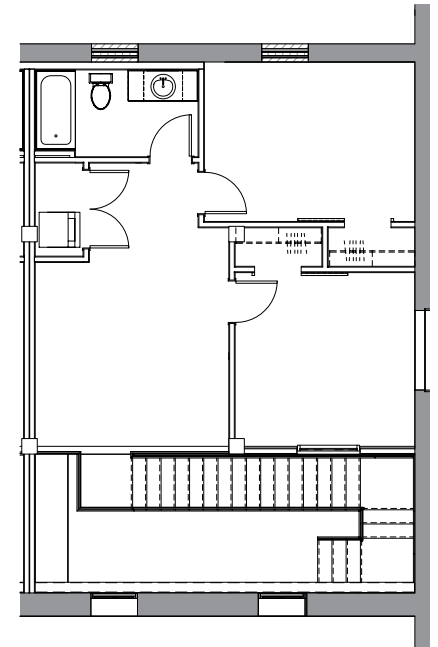
FIRST FLOOR



UNIT 03 (1ST FLOOR)



UNIT 03 (2ND FLOOR)



ARTSPACE FEED & GRAIN

Lis & Earl Sethre Residential Wing

Residential

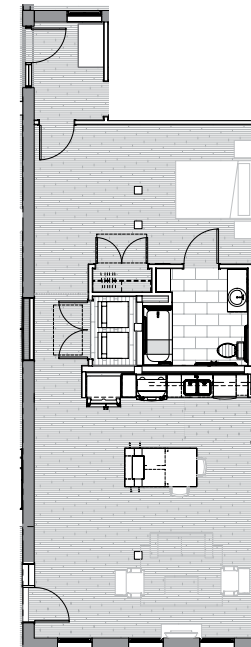
Unit #04

1ST FLOOR



- 905 sq. ft.
- 1-bedroom, 1-bath unit
- Starting at \$1,800/month
- Hardwood Floors
- Washer-Dryer In-Unit
- Black Stainless Steel Appliances
- ADA Appliances
- ADA Layout
- Interior and Exterior Entrances Into Unit

UNIT 04 (1ST FLOOR)



FIRST FLOOR



ARTSPACE FEED & GRAIN

Lis & Earl Sethre Residential Wing

Residential

Unit #05

1ST FLOOR

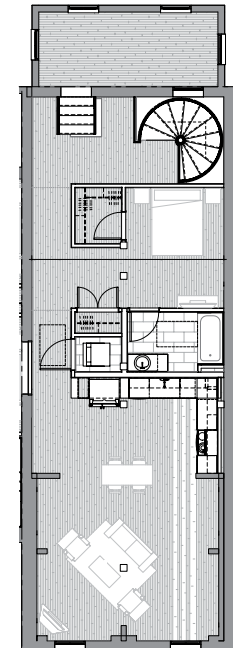
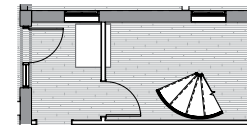
- 1,390 sq. ft.
- 1-bedroom, 1-bath unit
- Starting at \$1,850/month
- Hardwood Floors
- Washer-Dryer In-Unit
- Black Stainless Steel Appliances
- Sun Room



UNIT 05 (1ST FLOOR ENTRY)

UNIT 05 (2ND FLOOR)

FIRST FLOOR



ARTSPACE FEED & GRAIN

Lis & Earl Sethre Residential Wing

Residential

Unit #06

1ST AND 2ND FLOORS

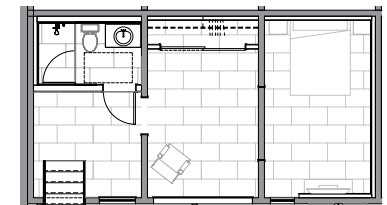
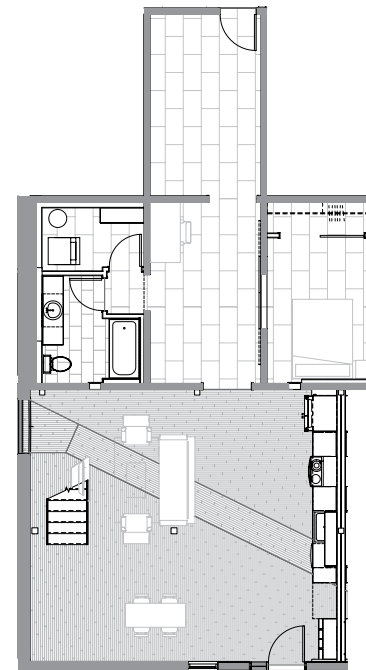
- 1,725 sq. ft.
- 2-bedroom, 2-bath unit
- Starting at \$2,150/month
- Hardwood Floors
- Washer-Dryer In-Unit
- Black Stainless Steel Appliances
- In-Unit Foyer and Storage
- Interior and Exterior Entrances Into Unit



UNIT 06 (1ST FLOOR)

UNIT 06 (2ND FLOOR)

FIRST FLOOR



ARTSPACE FEED & GRAIN

Lis & Earl Sethre Residential Wing

Residential

Unit #07

1ST AND 2ND FLOORS

- 1,345 sq. ft.
- 2-bedroom, 2-bath unit
- Starting at \$1,850/month
- Hardwood Floors
- Washer-Dryer In-Unit
- Black Stainless Steel Appliances
- In-Unit Foyer and Storage
- Interior and Exterior Entrances Into Unit



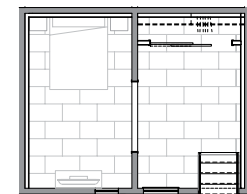
FIRST FLOOR



UNIT 07 (1ST FLOOR)



UNIT 07 (2ND FLOOR)



ARTSPACE FEED & GRAIN

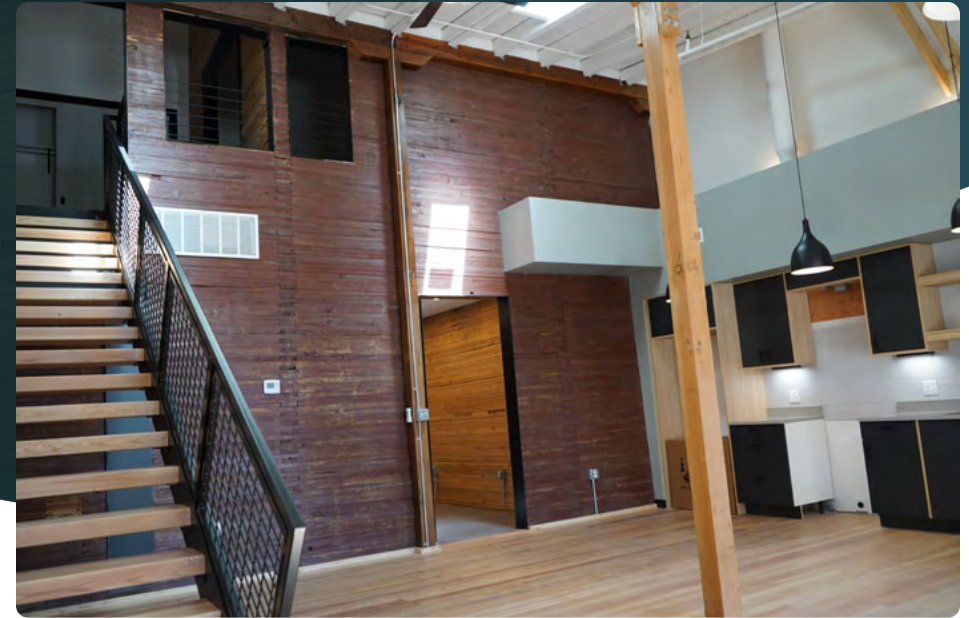
Lis & Earl Sethre Residential Wing

Residential

Unit #08

1ST AND 2ND FLOORS

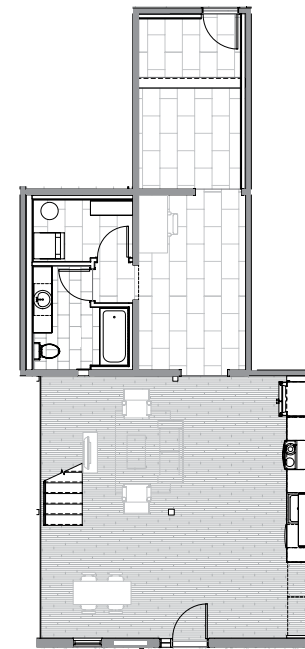
- 1,345 sq. ft.
- 2-bedroom, 2-bath unit
- Starting at \$1,850/month
- Hardwood Floors
- Washer-Dryer In-Unit
- Black Stainless Steel Appliances
- In-Unit Foyer and Storage
- Interior and Exterior Entrances Into Unit



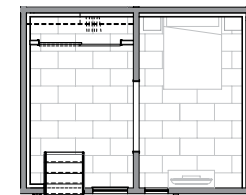
FIRST FLOOR



UNIT 08 (1ST FLOOR)



UNIT 08 (2ND FLOOR)



ARTSPACE FEED & GRAIN

Lis & Earl Sethre Residential Wing

Residential

Unit #09

1ST AND 2ND FLOORS

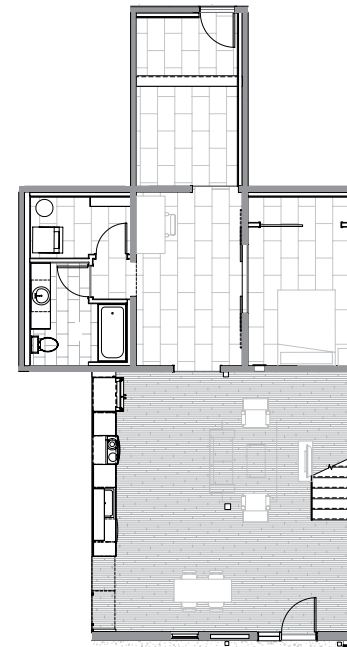
- 1,660 sq. ft.
- 2-bedroom, 2-bath unit
- Starting at \$2,150/month
- Hardwood Floors
- Washer-Dryer In-Unit
- Black Stainless Steel Appliances
- In-Unit Foyer and Storage
- Interior and Exterior Entrances Into Unit



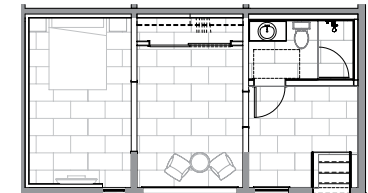
FIRST FLOOR



UNIT 09 (1ST FLOOR)



UNIT 09 (2ND FLOOR)



ARTSPACE FEED & GRAIN

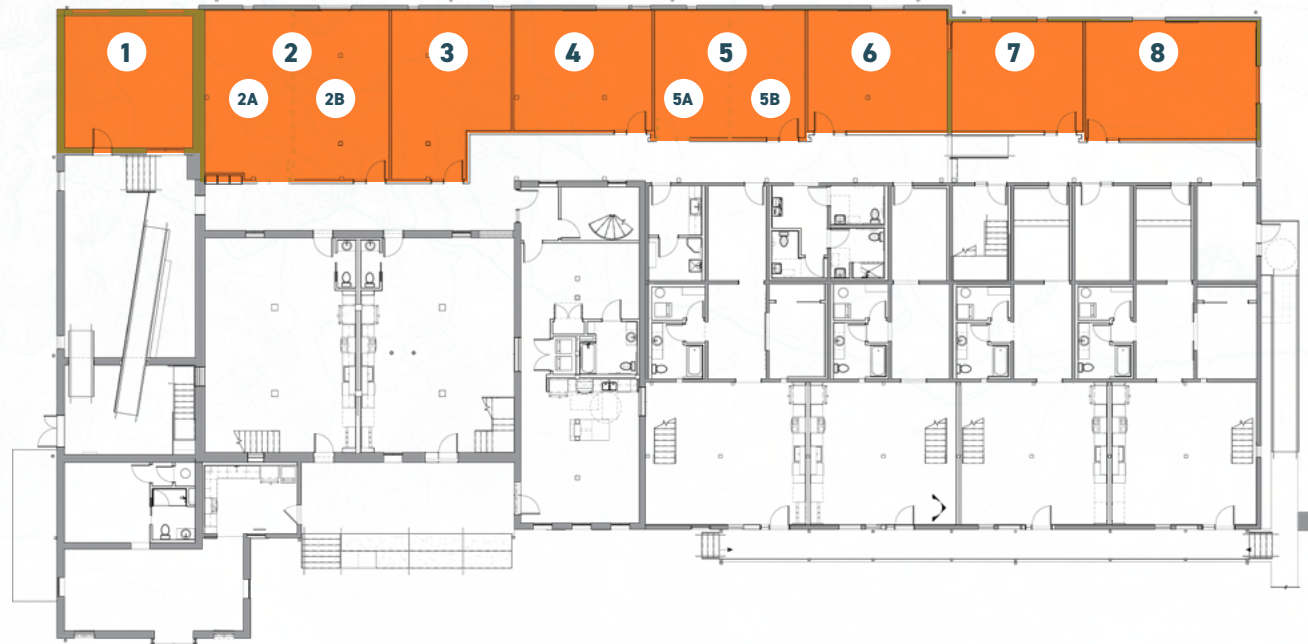
Barry Floyd Studio Wing made possible through
the generous donation of Teresa & Paul Mueller

Commercial

All Units
1ST FLOOR



Unit	Total Square Footage	Gross Rents Starting at \$1.50/sq. ft.	
1	464 sq. ft.	\$	696.00
2	830 sq. ft.	\$	1,245.00
3	475 sq. ft.	\$	713.00
4	437 sq. ft.	\$	656.00
5	500 sq. ft.	\$	750.00
6	445 sq. ft.	\$	668.00
7	380 sq. ft.	\$	570.00
8	520 sq. ft.	\$	780.00



Artspace Feed & Grain Contact

Residential and Commercial Leasing

To learn more about our
residential and commercial unit
opportunities, please contact

Toi Dugar

feedandgrain@artspace.org

