

artspace

PRESENTATION OF FINDINGS:
FEASIBILITY STUDIES, MARKET STUDIES, AND ASSET MAPPING IN THE NWA
COMMUNITIES OF BENTONVILLE, SPRINGDALE, ROGERS, AND FAYETTEVILLE

JANUARY - NOVEMBER 2018

WALTON FAMILY
FOUNDATION



A close-up photograph of a glassblower in a workshop. The glassblower is wearing safety glasses and a dark shirt. He is holding a pair of metal pliers in his left hand, which are gripping a glowing red glass piece attached to a glassblowing rod. The red glass piece is being shaped into a bulbous form. The background is slightly blurred, showing the workshop environment. The word "artspace" is overlaid in large, white, lowercase letters across the top half of the image.

artspace

Artspace's mission is to create, foster, and preserve affordable space for artists and arts organizations.

Established in 1979, Artspace is a national nonprofit real estate developer for the arts. A leader in the creative placemaking field. Based in Minneapolis with offices in Seattle, Denver, New York, New Orleans, and DC.

52 projects in operation or development in 32 cities and 22 states



WHAT WE DO: BEYOND BUILDINGS

2018 HIGHLIGHTS:

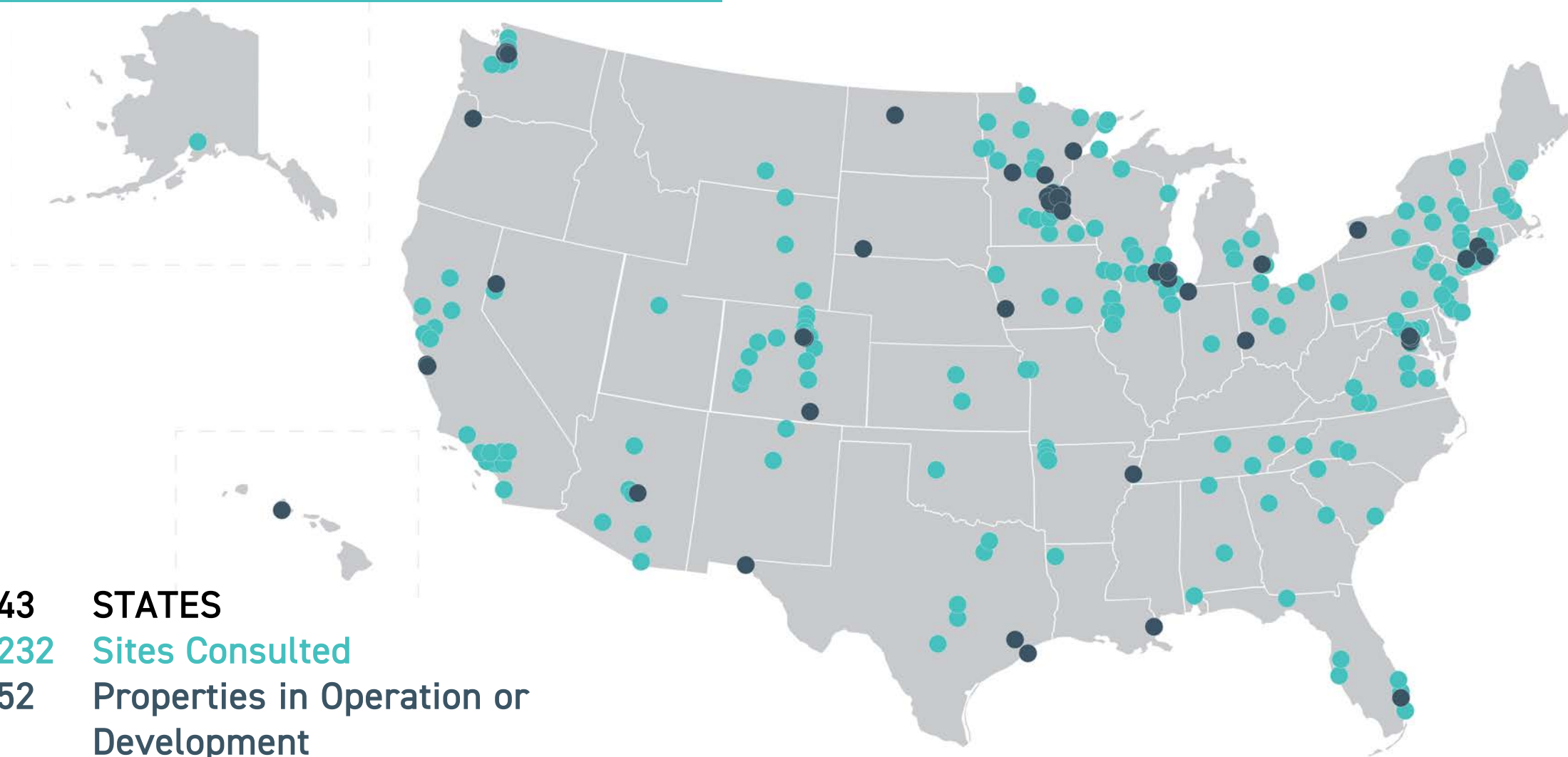
Launched **ARTSPACE IMMERSION** in the Twin Cities and Memphis, working with a cohort of non-profits facing space related challenges. Continued a **REGIONAL FEASIBILITY AND MARKET STUDIES** in Northwest Arkansas

2018 Consulting Work



ARTSPACE
CONSULTING

ARTSPACE'S NATIONAL INFLUENCE



43 STATES
232 Sites Consulted
52 Properties in Operation or Development

OVERALL NWA FEASIBILITY RECOMMENDATIONS

Need for artist infrastructure in all four communities in NWA

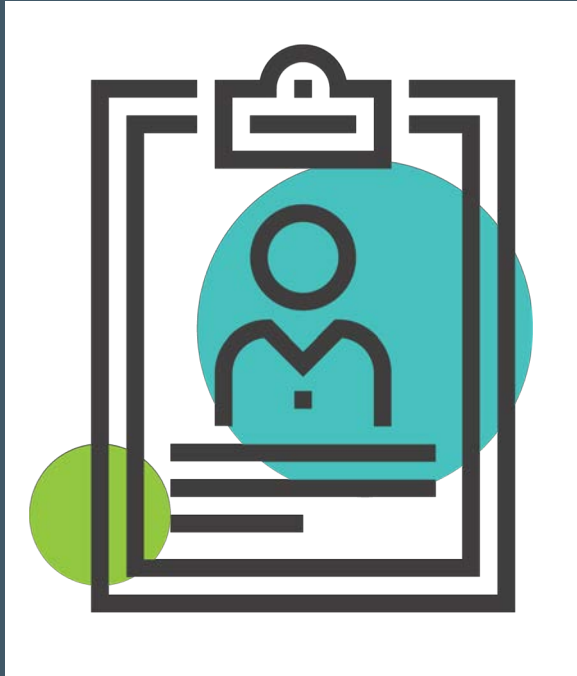
- Provide long-term affordability for NWA artists and creatives
- Create a variety of types of spaces that meet the demands of current and future NWA artists and their families
- Connect artists to existing and growing NWA assets such as parks, trails, downtown development and more
- Focus primarily on local and existing artists
- Connect NWA artists to the network of Artspace artists and creative communities across the country (over 1,800 live/work units)



METHODOLOGY

- **12 Focus Groups** with artists, civic and business leaders, funding and financing leaders, Marshallese community: **236 total participants**
- **8 Community Meetings** with over **500 participants**
- More than **50 conversations** with individuals, business owners, funders, politicians, city staff, etc.
- Online survey that reached **811 artists and creatives**
- **20 tours** of potential sites and local creative assets
- Review of past planning studies
- Core group training



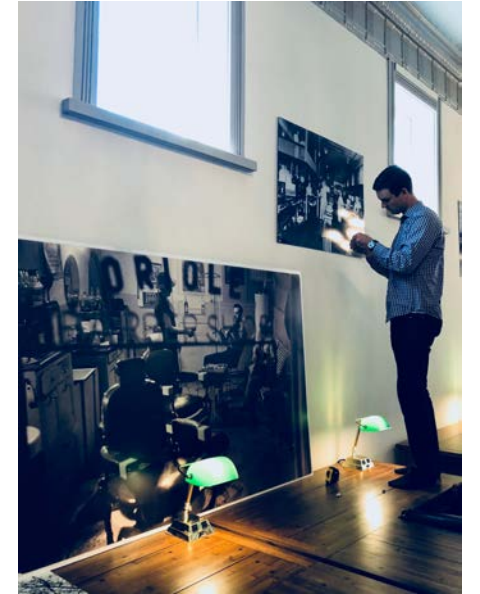


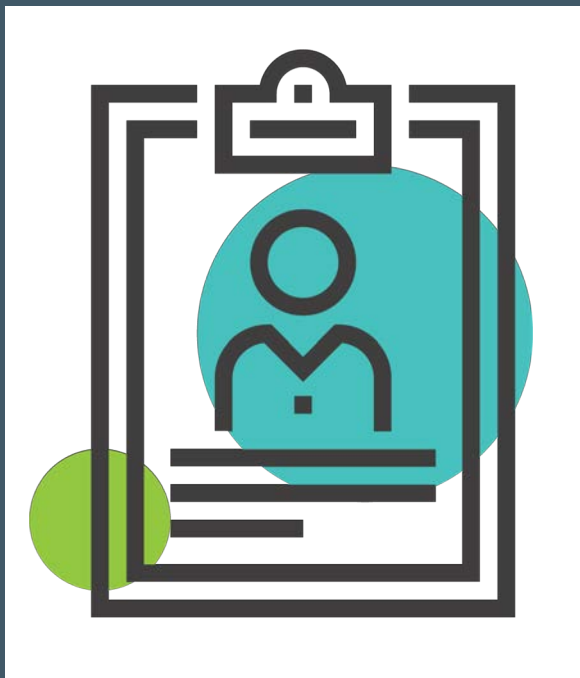
PRELIMINARY FEASIBILITY STUDY THEMES

January-May 2018

MAJOR THEMES IN EACH COMMUNITY

- **Bentonville:** Affordability and connections to Crystal Bridges and the Momentary
- **Fayetteville:** More space for working artists; keeping and retaining students
- **Springdale:** Downtown revitalization with an anchor for the arts
- **Rogers:** Downtown revitalization with connections to bike amenities





ARTS MARKET STUDY SURVEY RESULTS

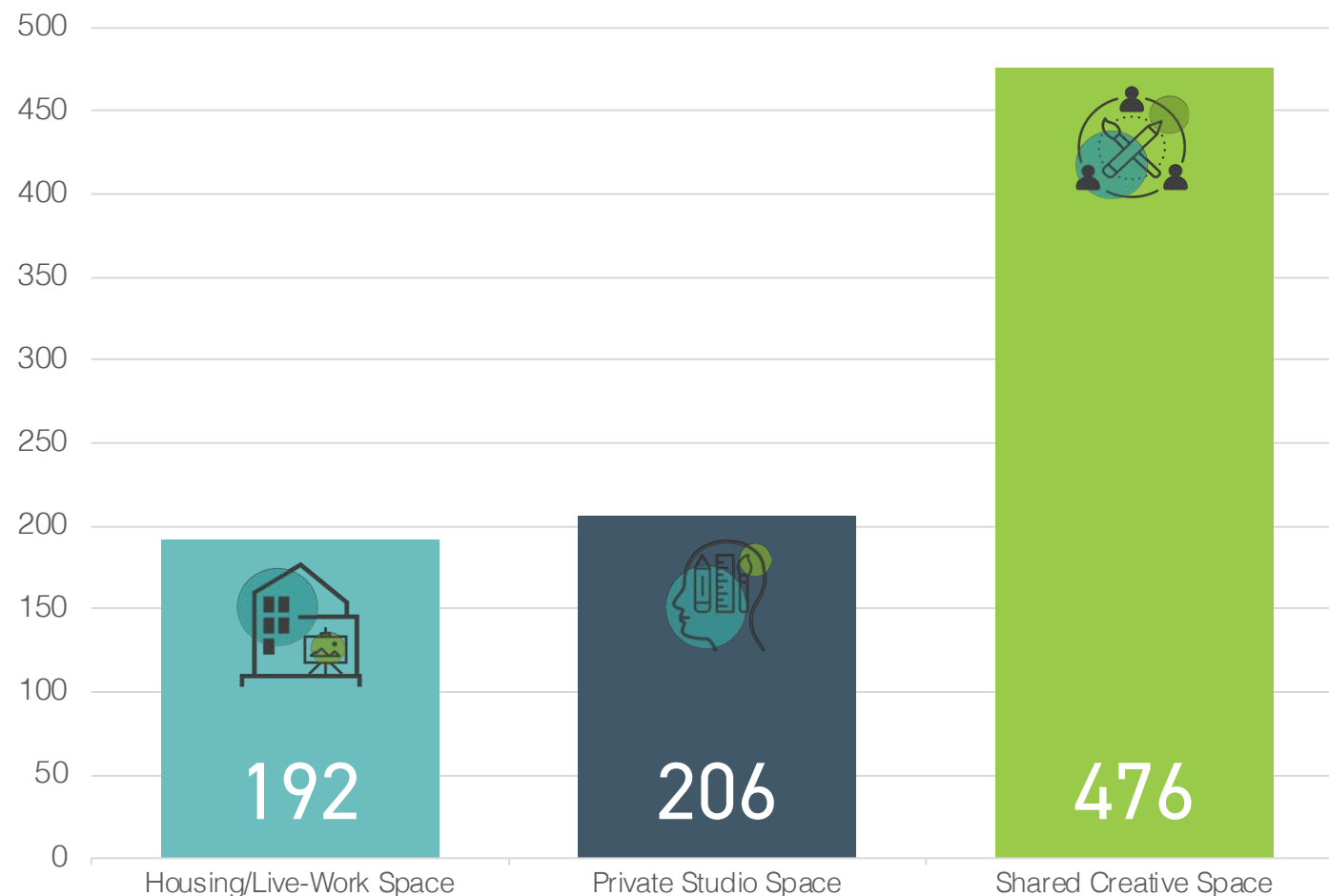
July-October 2018

KEY FINDINGS: INDIVIDUAL ARTISTS & CREATIVES



811 total individual respondents:

- **662 (82%)** of respondents are interested in space
- **192** are interested in relocating to **affordable artist live/work community**
- **206** are interested in **private studio space**
- **476** are interested in renting **shared creative space**

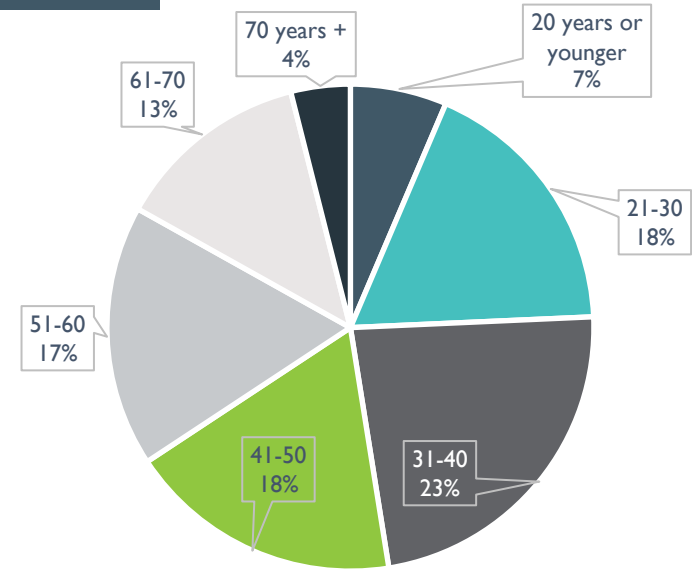


WHO TOOK THE SURVEY?

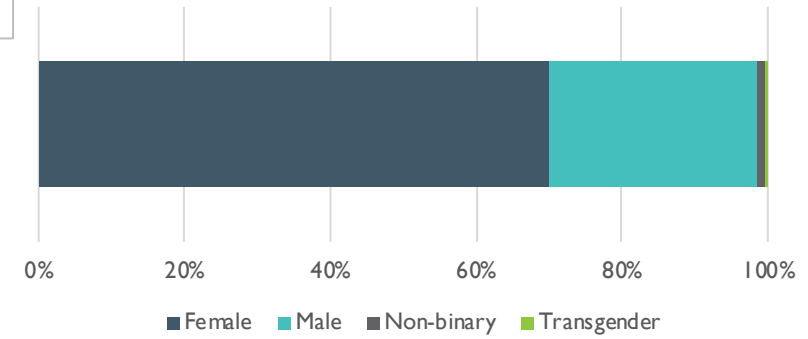


Top 10 Reported Areas Of Arts/Cultural/Creative Disciplines	
1	Painting/Drawing
2	Art gallery/Exhibition space/Curatorial
3	Crafts/Fine crafts
4	Photography
5	Arts education/instruction
6	Music (vocal/instrumental/recording/composition)
7	Mixed media
8	Writing/Literary arts
9	Graphic arts/design
10	Theater arts (acting, directing, production, etc.)

Respondent Age



Respondent Gender



Race/ethnicity of respondents	Total Resp.	*NWA 2018
White/Caucasian	81%	73%
Hispanic/Latinx(o)(a)	7%	22%
Multiracial/Multiethnic	3%	3%
Pacific islander/Native Hawaiian/Marshallese	3%	2%
Asian	2%	5%
Indigenous American/Native Alaskan	2%	1%
Black/African American	1%	4%
Some other race	n/a	14%

*NWA 2018 Race and Ethnicity Estimates through Esri Community Analyst

WHO TOOK THE SURVEY?



Total who currently live in NWA	782	96%
----------------------------------------	------------	------------

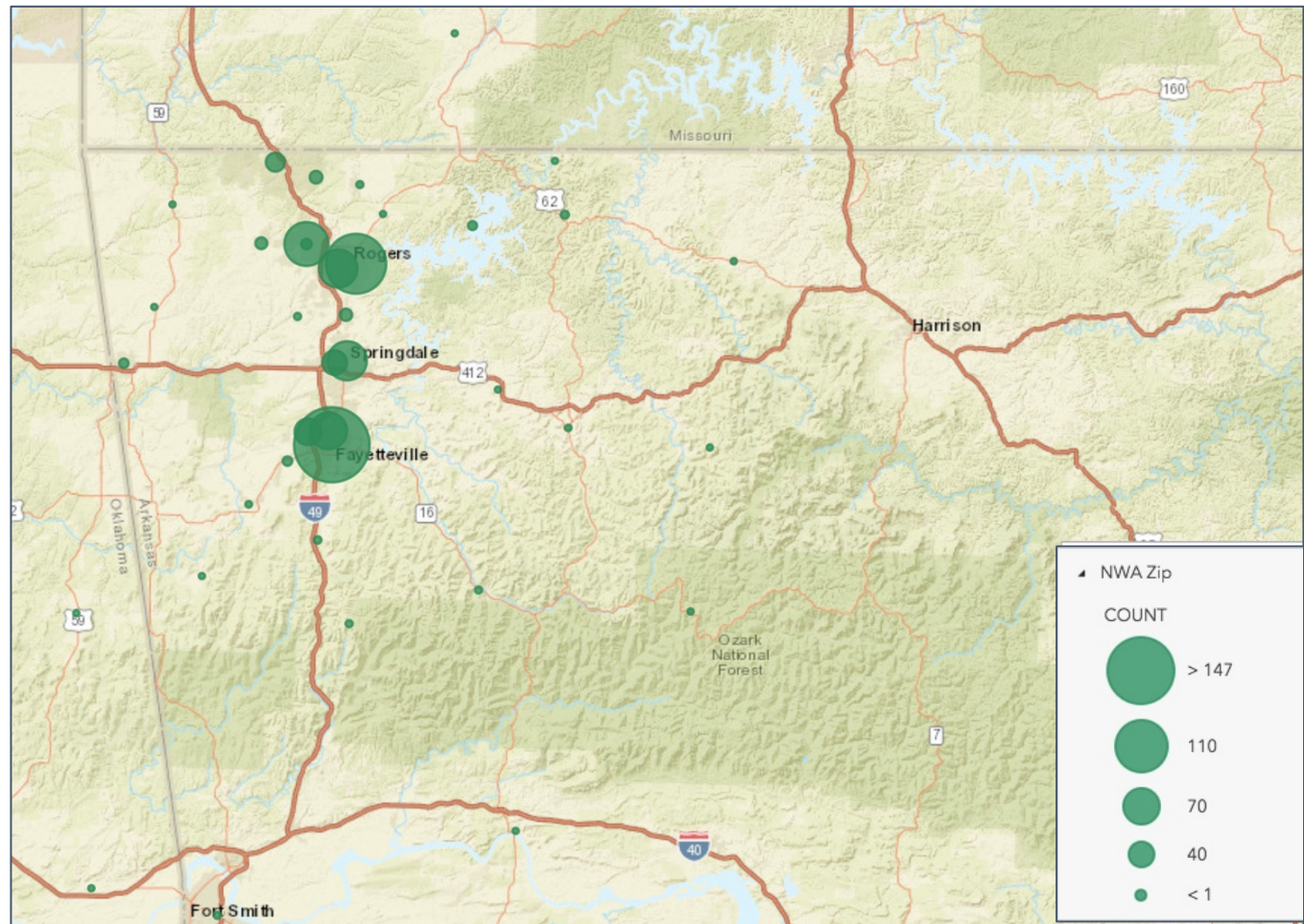
Where (city) total respondents live in NWA		
Fayetteville	248	33%
Rogers	179	24%
Another city/town in Northwest Arkansas (please specify)	109	14%
Springdale	107	14%
Bentonville	96	13%
Unincorporated Northwest Arkansas	15	2%



HOW DOES NWA COMPARE TO OTHER SURVEYS?

Region	Population	Total Respondents
NWA (4-city population)	274,487	811
Charleston/North Charleston	232,346	345
Richmond/Petersburg	251,672	737

WHO TOOK THE SURVEY?

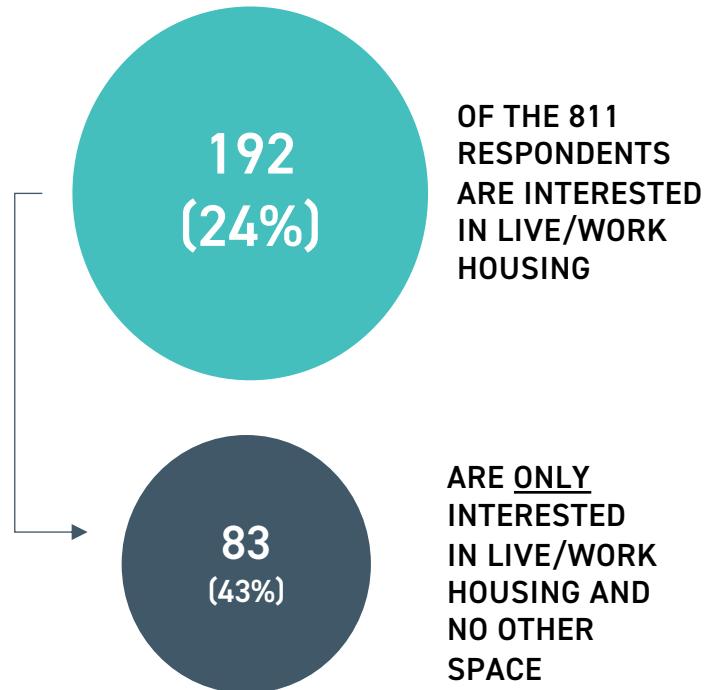


*Note: The new 72713 zip code is not available for mapping and has been combined back with 72712.
Source: Esri Community Analyst*

INTEREST IN LIVE/WORK ARTIST HOUSING



TOTAL INTERESTED IN AFFORDABLE LIVE/WORK HOUSING



Where artists interested in live/work <u>currently</u> live		
Fayetteville	83	43%
Springdale	28	15%
Rogers	23	12%
Another city/town in Northwest Arkansas (please specify)	22	11%
Bentonville	18	9%
Unincorporated Northwest Arkansas	2	1%

Where in Northwest Arkansas would you consider relocating to a live/work community?		
Fayetteville	122	64%
Bentonville	95	49%
Rogers	73	38%
Springdale	69	36%
Other	22	11%

INTEREST IN LIVE/WORK ARTIST HOUSING

- 75% make less than 25% of their income from their art/creative work
- Area Median Income (AMI) Breakdown
 - 44% (84) interested respondents have household incomes at or **below 60% AMI**
 - 59% (113) of interested respondents have household incomes at or **below 80% AMI**
- 156 (81%) currently rent their living space

80 total
units



Northern Warehouse // St. Paul, MN



PS109 El Barrio Artspace Lofts // New York, NY



INTEREST IN AMENITIES/ FEATURES

OVERALL MOST PREFERRED TYPES OF BUILDING AMENITIES

- Building Wi-Fi
- Gallery/Exhibition space
- Utility sink with trap
- Additional storage
- Classroom(s)/Teaching Space
- Outdoor work area
- Wi-Fi (common areas)
- Gallery/Exhibition space
- General-use studio/flex-space
- Community Garden (ground or rooftop)
- Networking/Meeting/Lounge Space

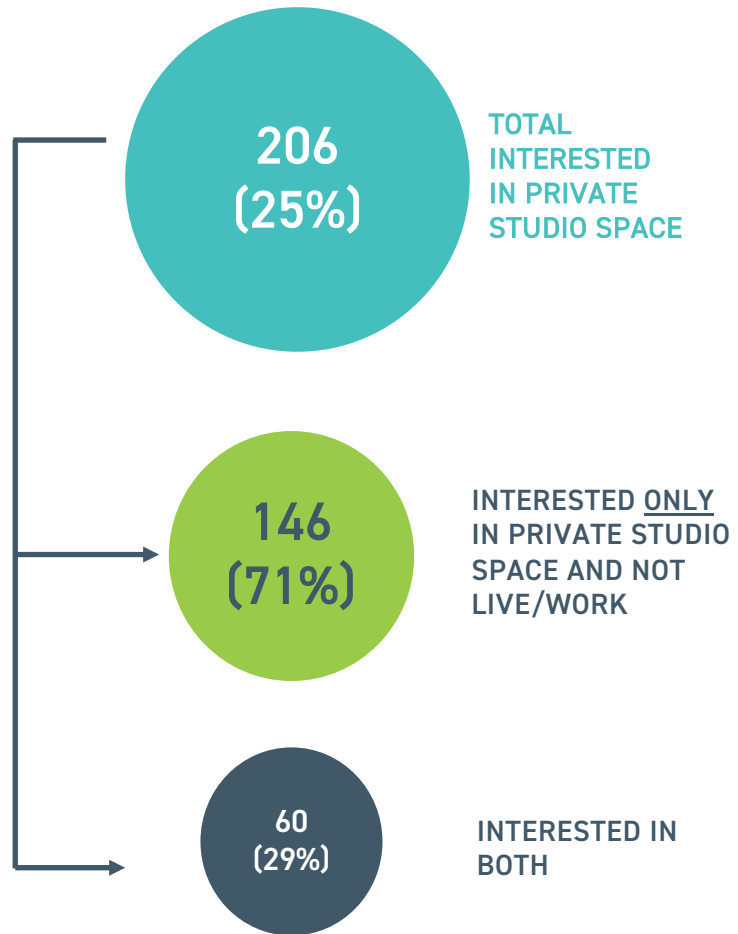


Harvester Artspace Lofts // Council Bluffs, IA



Traffic Zone // Minneapolis, MN

INTEREST IN PRIVATE STUDIO SPACE



Where would you consider renting private studio or creative workspace on an ongoing basis?

Fayetteville	122	59%
Rogers	85	43%
Bentonville	74	36%
Springdale	50	24%
Other	26	13%

Location of current studio space outside of the home that is rented on an ongoing basis?

Fayetteville	19	50%
Springdale	6	16%
Rogers	5	13%
Another city/town in NWA	3	8%
Bentonville	2	5%
Total	38	100%

INTEREST IN PRIVATE STUDIO SPACE



Grain Belt Studios // Minneapolis, MN



Northern Warehouse // St. Paul, MN



Mt. Baker // Seattle, WA

MOST REQUESTED PRIVATE STUDIO SIZE*
65% (134) would be served by
500 sq. ft. or less
**A variety of sizes are needed*

37-52
spaces
across NWA
- in phases

- Rental agreements that do not exceed **\$300 per month**, gross rent regardless of space size.
- With many targeted lower, at least 50% renting at \$200 or less.

INTEREST IN SHARED CREATIVE SPACE



476
(59%)

OF THE 811
RESPONDENTS ARE
INTERESTED IN
ACCESS TO SHARED
CREATIVE SPACE

Current location in Northwest Arkansas for those interested in shared creative space

Fayetteville	139	31%
Rogers	100	22%
Another city/town in NWA	72	16%
Bentonville	68	15%
Springdale	55	12%

Of the 476 interested, **324 (68%)** are **only** interested in this type of space and no other type



Grain Belt Studios // Minneapolis, MN

INTEREST IN SHARED CREATIVE SPACE



Most Preferred Shared Space Types in Northwest Arkansas *

Space Type	Count	Percent of Respondents
Fine Art/Visual Art Studio (General)	195	41%
Exhibition/ Presentation	189	40%
Retail/Market Space	133	28%
Industrial (glass, metal, wood, clay/ceramics, spray paint)	103	22%
Co-working (desktop art, design, literary, administration)	93	20%
Performance (theater, music, dance)	87	18%
Rehearsal (dance, theater, music)	87	18%

**Respondents could choose up to 3 categories of shared space that could be accessed on a paid membership or short-term basis*

Artspace recommends including shared creative space in any new multi-use facility

REGIONAL RECOMMENDATIONS



Northwest Arkansas as a region supports:

- **Up to 80 workforce artist live/work** units when meeting the following market-related criteria:
 - 64 affordable live/work spaces leased to artists households qualifying at or below 60%AMI
 - 10 additional workforce live/work spaces if targeting up to 80% AMI
 - 7 additional live/work spaces when accounting for the anticipated regional growth rate of 10% (2% annually) over the next five years
- **Up to 37 private studio/workspaces**
 - This recommendation assumes that live/work space is also created.
 - This recommendation should be revisited in the context of whether or not short-term general-purpose studio/workspaces are created to meet the need for shared creative space.

COMMUNITY SPECIFIC FINDINGS FROM ARTS MARKET SURVEY



BENTONVILLE

- Live/Work: 14-32 units
- Private Studio Space: 8-19 units

SPRINGDALE

- Live/Work: 10-23 units
- Private Studio Space: 3-13 units

ROGERS

- Live/Work: 9-24 units
- Private Studio Space: 8-22 units

FAYETTEVILLE

- Live/Work: 31-41 units
- Private Studio Space: 18-31 units

- Specific recommendations take data from the Arts Market Survey, the growing need for affordable housing, and regionwide population growth into consideration.



ARTSPACE
RECOMMENDED
PROJECT CONCEPT(S)

BENTONVILLE RECOMMENDATIONS

A creative community that complements Crystal Bridges and the Momentary, including:

- Affordable live/work artist housing
- Artist-in-Residency spaces
- Connections to trails, green space, downtown Square and Brightwater



SPRINGDALE RECOMMENDATIONS

Mixed-use with focus on cultural space, including:

- affordable live/work artist housing
- working studio spaces for individual artists in a shared environment
- Connection to Luther George Park and bike trails
- Connections to Marshallese and Latinx cultures



ROGERS RECOMMENDATIONS

A downtown historic development including:

- Affordable live/work artist housing units
- Working studios for artists
- Connection to Frisco Park and Historic Downtown
- Connection to Arkansas Arts Academy, Arkansas Public Theatre, and Experimental House



Photo Credit: Artspace, City of Rogers, Rogers Experimental House

FAYETTEVILLE RECOMMENDATIONS

A classic mixed-use development including:

- Affordable live/work artist housing
- Working studios for individual artists
- Link to Fayetteville Square artists, bike trails and area transportation
- Integration with the Cultural Arts Corridor
- Programmatic connections to University Arts Campus Expansion and Arts and Design District

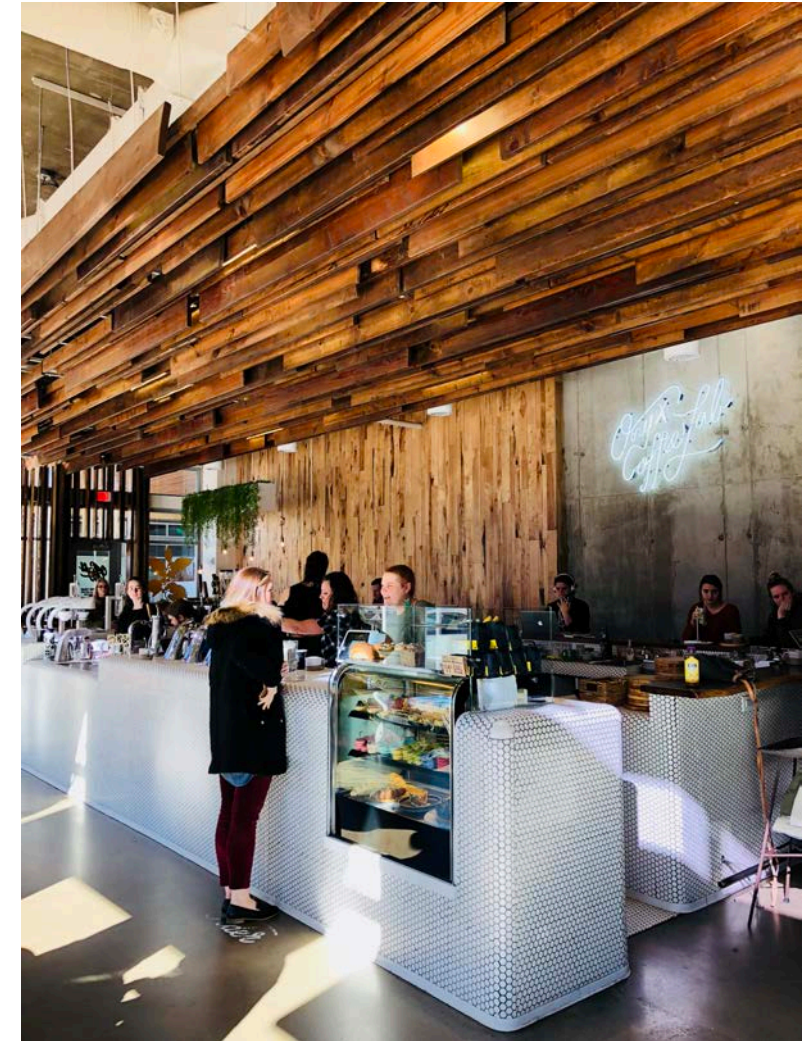




FUNDING & FINANCING

POTENTIAL FUNDING SOURCES

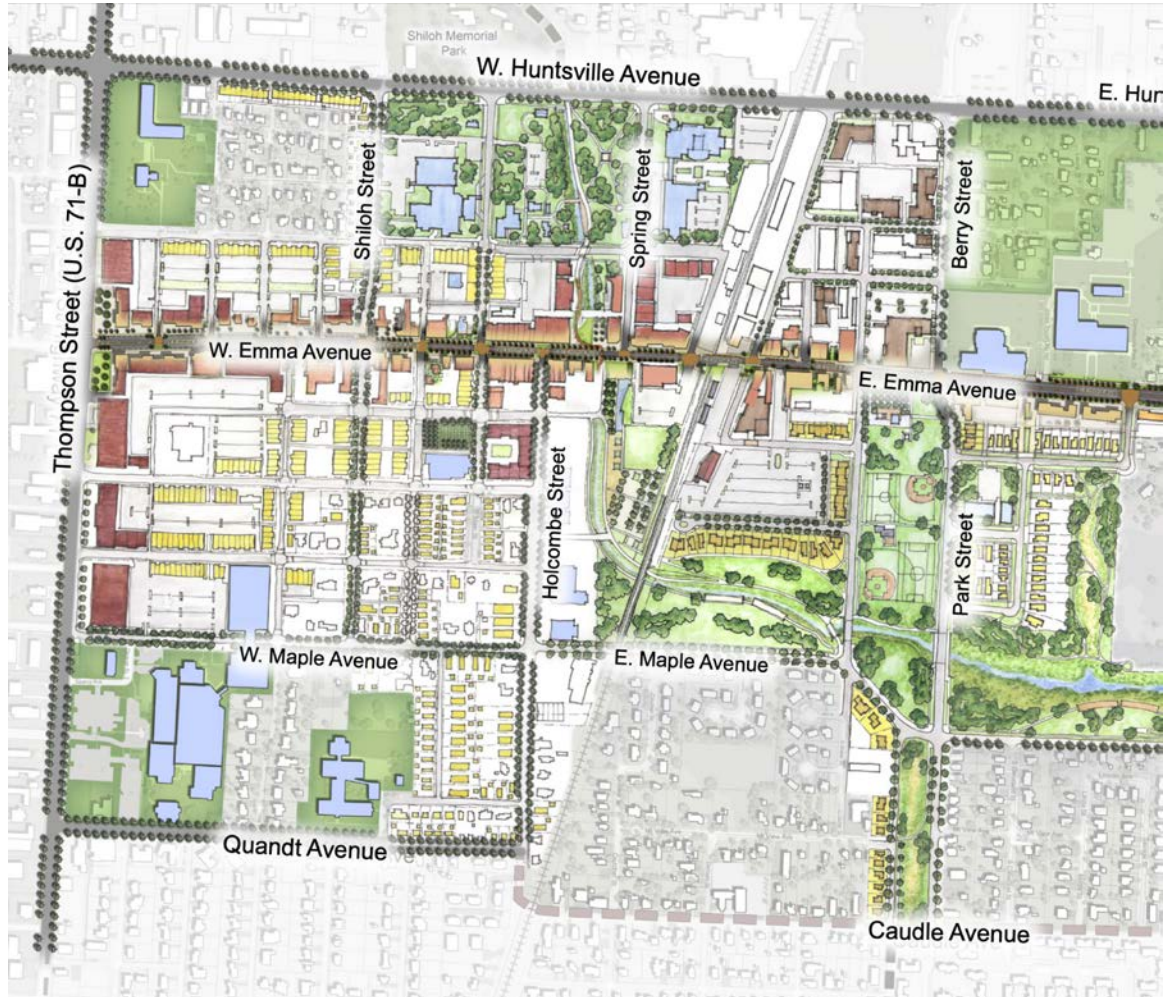
- Federal workforce housing programs
- State funds for economic development and workforce housing
- Walton Family Foundation, Walmart Foundation, Tyson Foods, Arkansas Community Foundation and other philanthropic sources
- Other city, county sources as applicable for workforce housing, economic development
- Federal, state and private resources align for multiple mixed-use live/work projects.



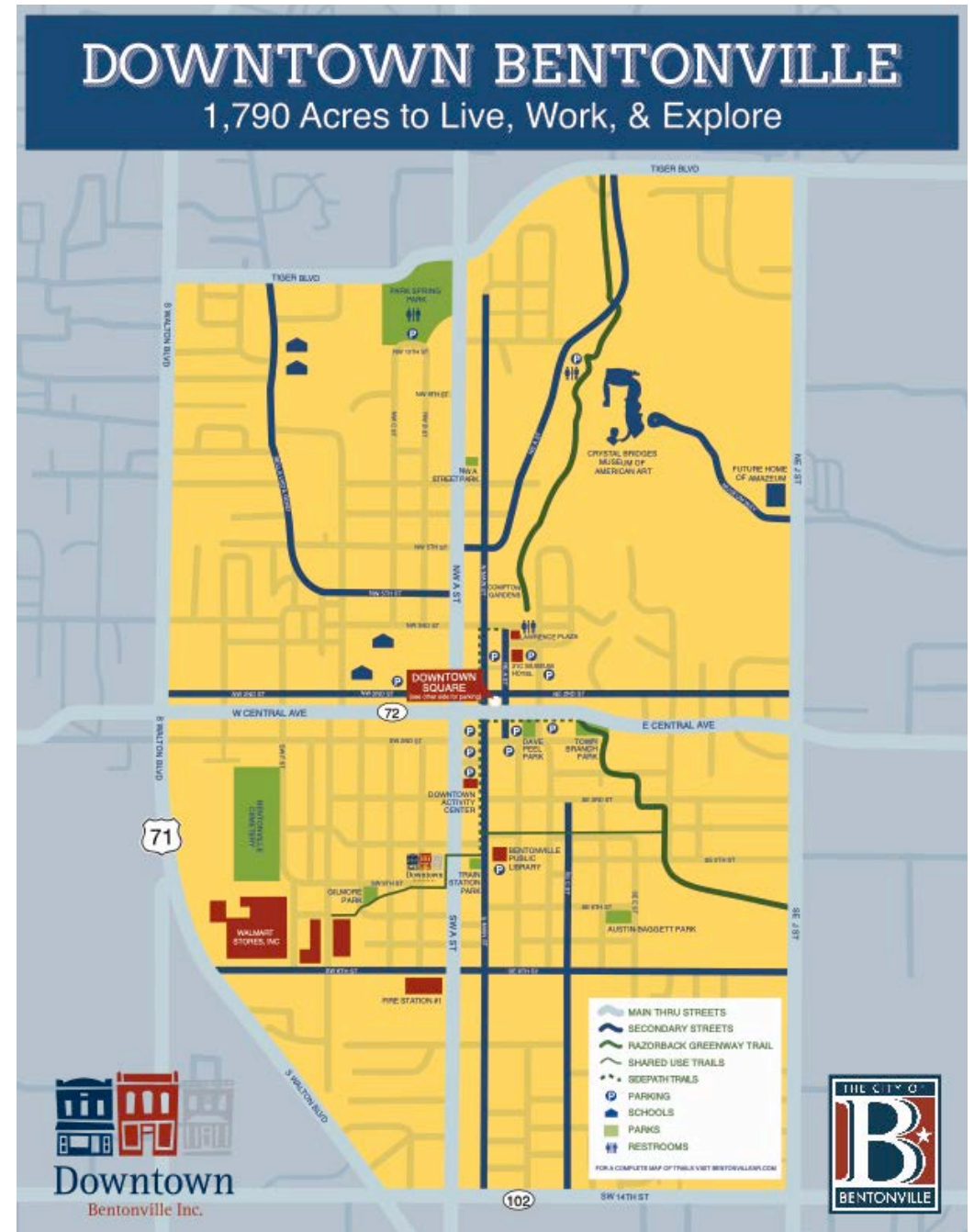


SITE RECOMMENDATIONS

DOWNTOWN SITES IN BENTONVILLE AND SPRINGDALE



Springdale

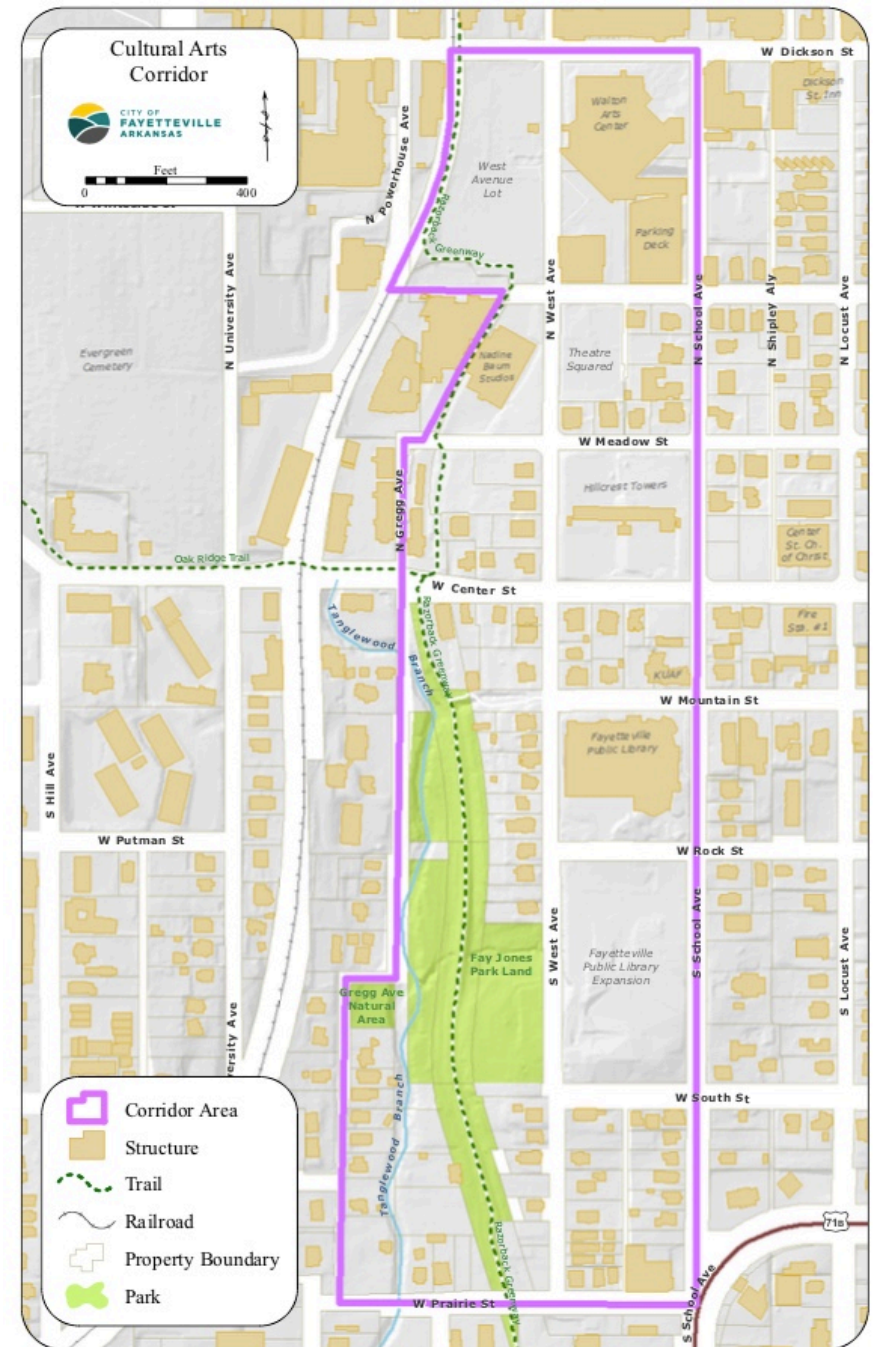


Bentonville

DOWNTOWN SITES IN FAYETTEVILLE AND ROGERS



Rogers



Fayetteville

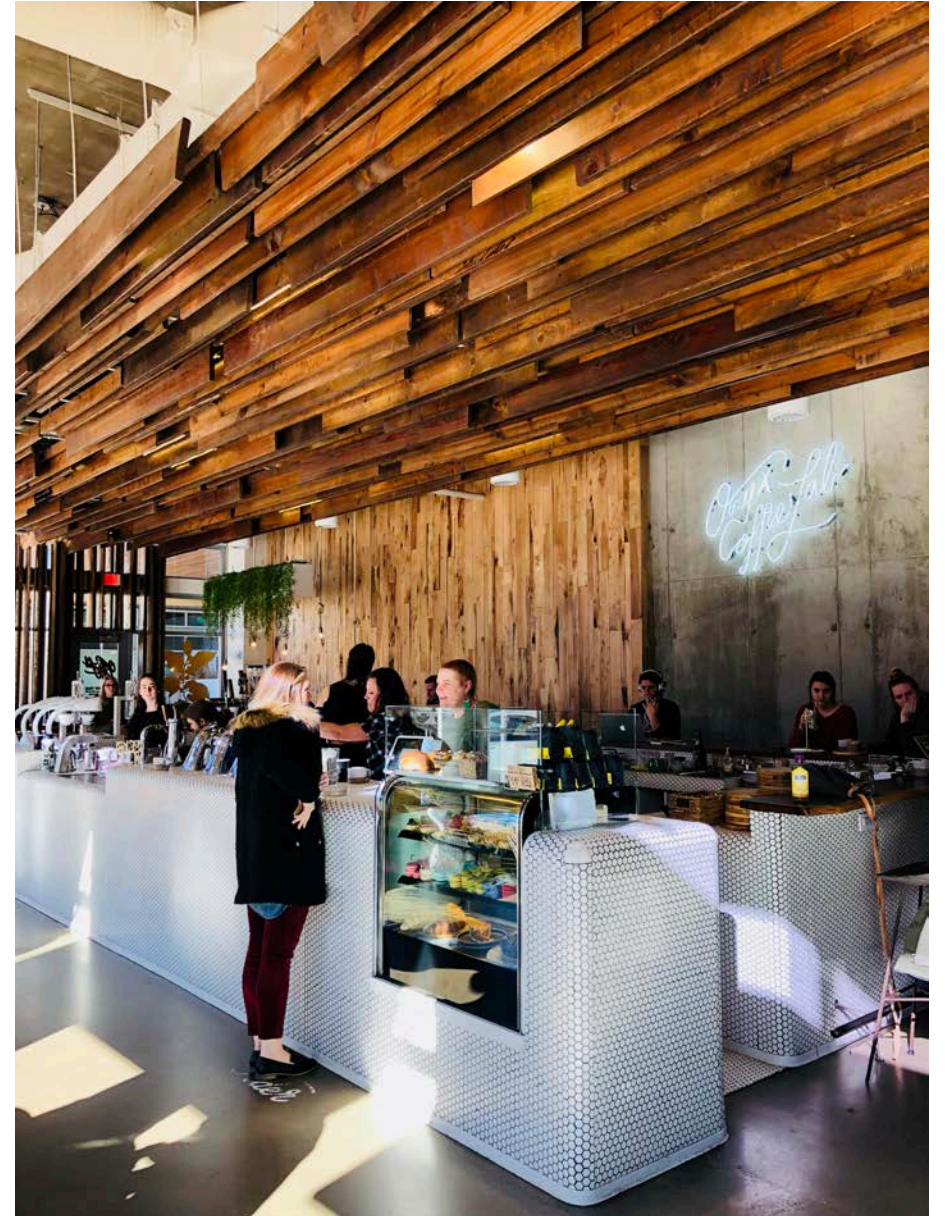
SUMMARY CONSIDERATIONS AND RECOMMENDATIONS

- Timeline for financing for all four projects
- Population growth and implications on market demand
- Continued engagement with local ambassadors for each community
- Beyond the buildings:
 - Creating stronger regional artist connections
 - Connect with new head of NWA Regional Arts Council



HOW CAN THIS HELP LOCAL DEVELOPERS?

- Understand the regional space needs of the creative community
- Identify opportunities to carve out creative space in existing buildings and projects
- Plan ahead for a higher density of creative activities in downtown
- Design new projects with the creative community's space needs in mind
- Use asset maps to build upon existing clusters of creative and cultural venues





ASSET MAPPING

July-November 2018

NORTHWEST ARKANSAS ASSET MAPPING OVERVIEW

DEFINITION OF AN ASSET: Any place where arts, culture, and creativity happens in the community.

City	# of Assets up to 2014*	Growth in Assets 2014-2018	Total Creative Assets in 2018	Percentage Growth 2014-2018
Bentonville	26	34	60	131%
Springdale	14	18	32	129%
Rogers	28	54	82	193%
Fayetteville	68	61	129	90%
NWA TOTAL	136	167	303	123%

**Includes only those still open and included on the attached maps, data supplied by WolfBrown, interviews, and research*

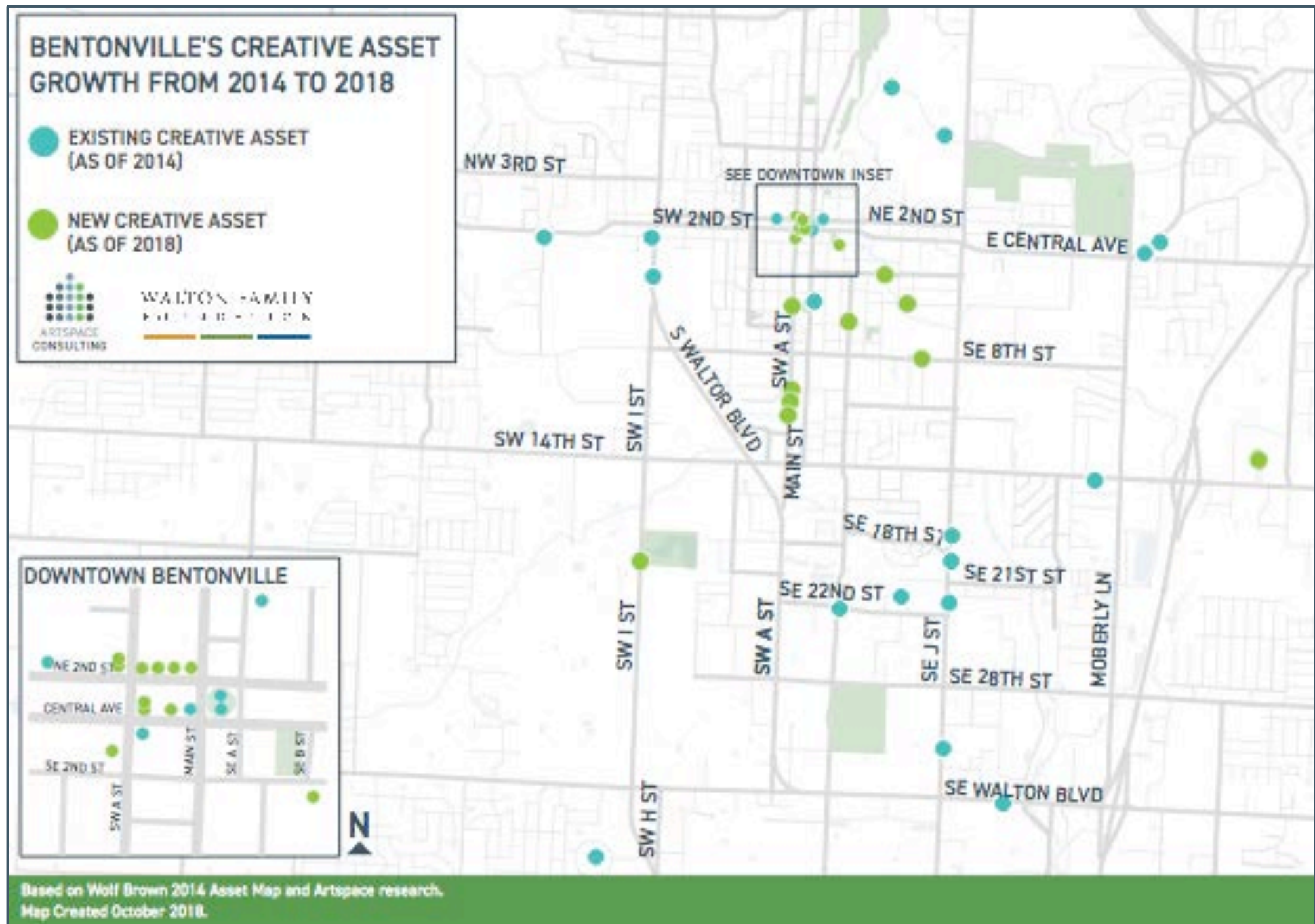
BENTONVILLE

Number of Assets in 2014 - 26

New Creative Asset opened between 2014-2018 - 34

Total Creative Assets in 2018 - 60

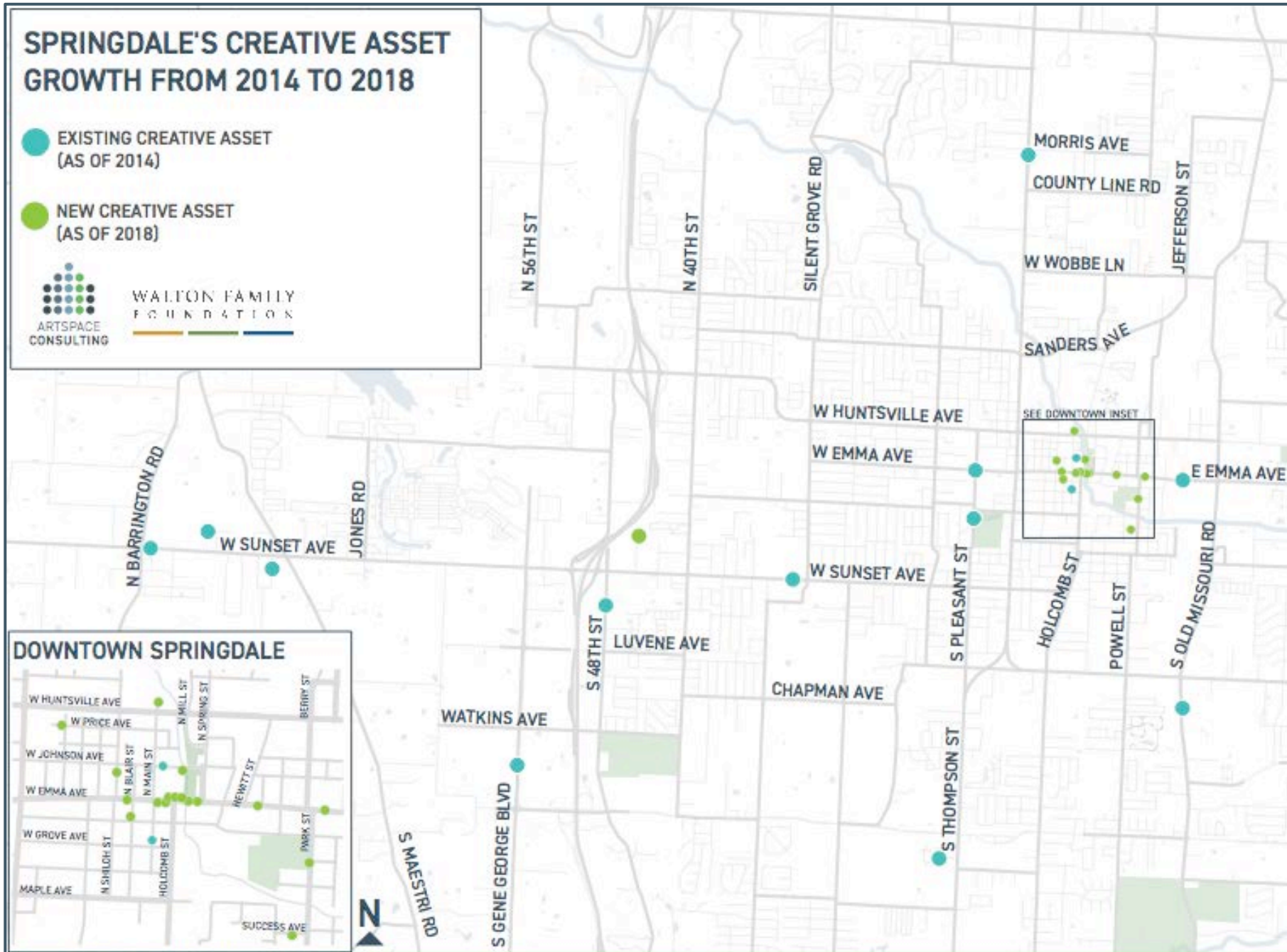
Percentage Growth 2014-2018 - 131%



SPRINGDALE'S CREATIVE ASSET GROWTH FROM 2014 TO 2018

● EXISTING CREATIVE ASSET (AS OF 2014)

● NEW CREATIVE ASSET (AS OF 2018)



SPRINGDALE

Number of Assets in 2014 - 14

New Creative Asset opened between 2014-2018 - 18

Total Creative Assets in 2018 - 32

Percentage Growth 2014-2018 - 129%

Based on Wolf Brown 2014 Asset Map and Artspace research. Map Created October 2018.

ROGERS

Number of Assets in 2014 - 28

New Creative Asset opened between 2014-2018 - 54

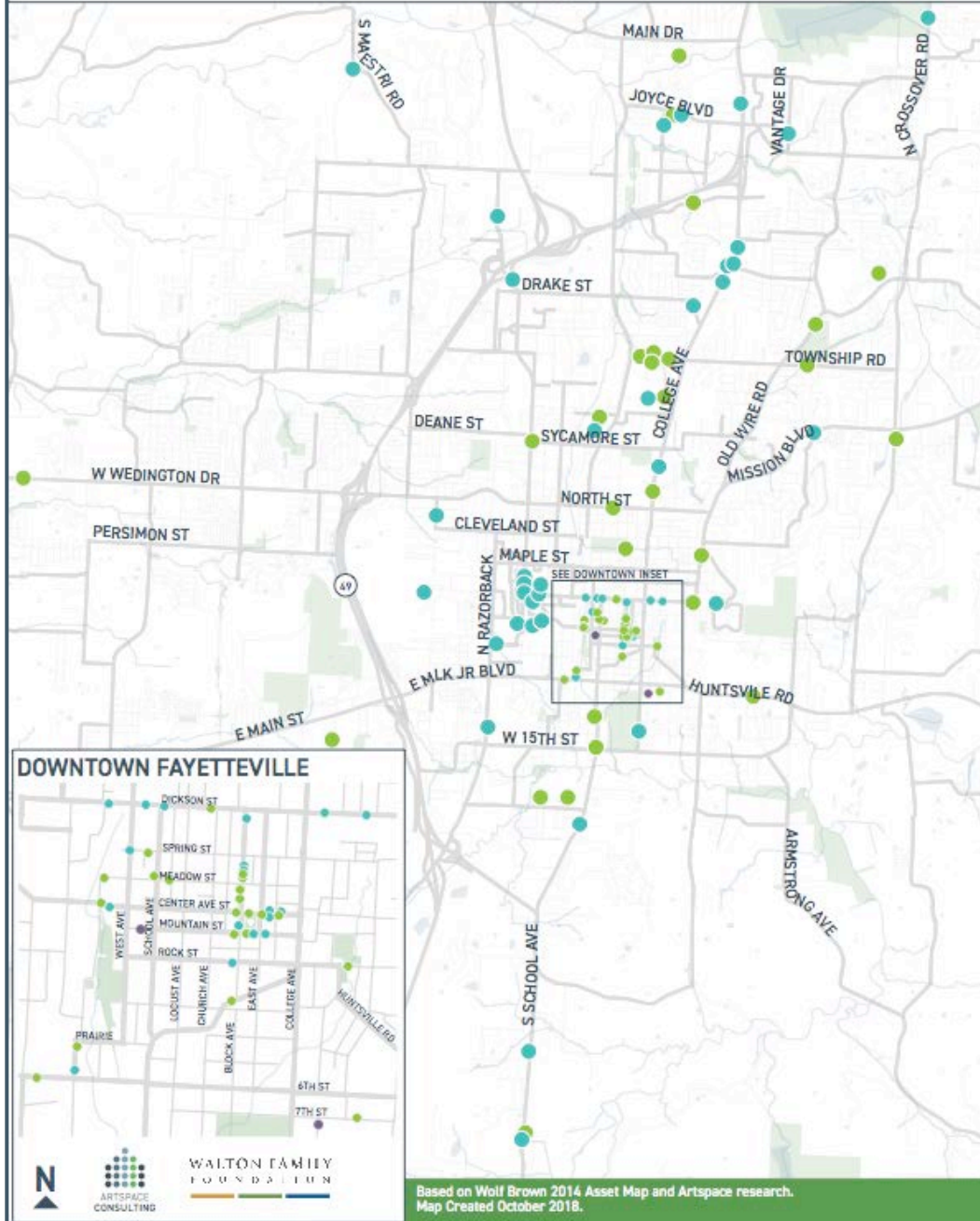
Total Creative Assets in 2018 - 82

Percentage Growth 2014-2018 - 193%



FAYETTEVILLE'S CREATIVE ASSET GROWTH FROM 2014 TO 2018

- EXISTING CREATIVE ASSET (AS OF 2014)
- NEW CREATIVE ASSET (AS OF 2018)
- CREATIVE ASSET OPENING SOON



FAYETTEVILLE

Number of Assets in 2014 – 68

New Creative Asset opened between 2014-2018 – 61

Total Creative Assets in 2018 – 129


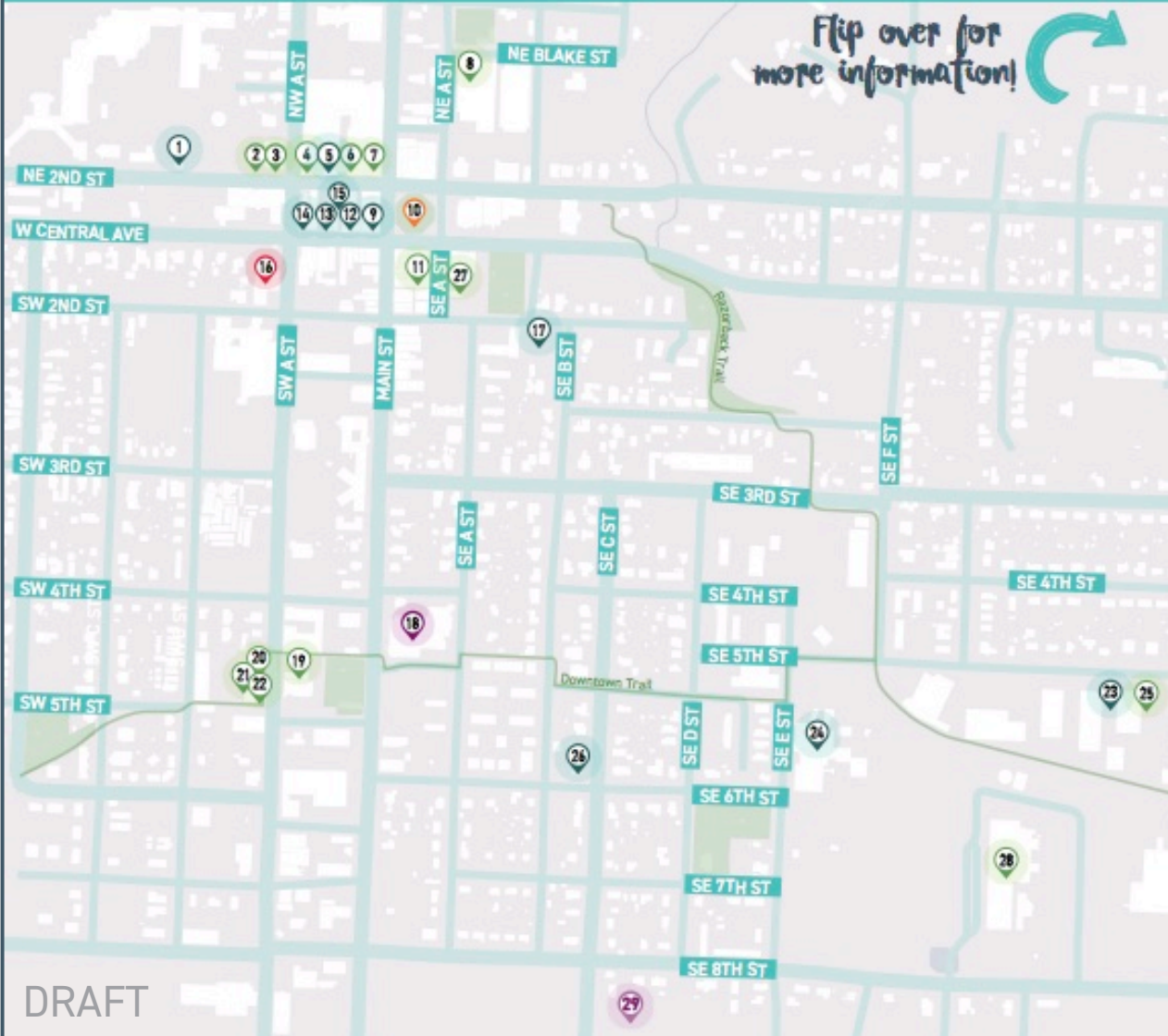
Percentage Growth 2014-2018 - 90%

Downtown Bentonville Arkansas

Creative Economy Map

-  Arts Organization/ Creative Business
-  Arts Education
-  Other Creative Space
-  Fairs and Festivals
-  Arts Education
-  Performing Arts Venue

Flip over for more information!

DRAFT

Downtown Bentonville Arkansas

Creative Economy Map

-  Arts Organization/ Creative Business
-  Arts Education
-  Other Creative Space
-  Fairs and Festivals
-  Arts Education
-  Performing Arts Venue

ARTS ORGANIZATION/ CREATIVE BUSINESS

- 1 BENTON COUNTY HISTORICAL SOCIETY
306 NW 2nd Street
- 8 BLOCK STREET RECORDS
100 NW 2nd Street
- 9 WALMART MUSEUM
105 N Main Street
- 12 FELLOW HUMAN
114 W Central Avenue
- 13 COMMUNITY RADIO STATION KOBV 103.3
128 W Central Avenue
- 14 METEOR GUITAR GALLERY
128 W Central Avenue
- 18 WALTON FAMILY FOUNDATION
125 W Central Avenue
- 17 HAXTON ROAD STUDIOS
222 SE 2nd Street
- 23 5TH STREET STUDIO
1000 SE 5th Street, Ste A
- 24 THE MOMENTARY (OPENING SOON)
507 SE E Street
- 26 HOUSE OF SONGS OZARKS
508 SE C Street

OTHER CREATIVE SPACE

- 2 UNDERCROFT
201 NW A Street
- 3 PREACHER'S SON
201 NW A Street
- 4 FLY OZ
110 NW 2nd Street
- 6 ONYX COFFEE LAB
100 NW 2nd Street
- 7 PRESSROOM
100 NW 2nd Street, Suite 100
- 8 21C MUSEUM HOTEL
200 NE A Street
- 11 YOGA STORY
106 SE A Street
- 19 THE FORGE
407 SW A Street
- 20 211 CAFE
410 SW A Street
- 21 BIKE RACK BREWING CO.
410 SW A Street #6
- 22 PEDALER'S PUB
410 SW A Street
- 25 AIRSHIP COFFEE
1000 SE 5th Street, Ste A
+Two Friends Books and Records
- 27 SPICE AND TEA EXCHANGE
109 SE A Street
- 28 8TH STREET MARKET
801 SE 8th Street
Yeyo's Mexican Grill
Brightwater
South Market
The Holler
Markham and Fitz
Bike Rack Brewing Co.
Farmer's Market

FAIRS AND FESTIVALS

- 10 ON THE SQUARE
100 N Main Street
Bentonville First Fridays
Bentonville Farmers Market
Bentonville Arts and Culinary Festival

PERFORMING ARTS VENUE

- 16 RECORD
104 SW A Street

ARTS EDUCATION

- 18 BENTONVILLE PUBLIC LIBRARY
405 S Main Street
- 29 THADEN SCHOOL
410 SE Staggerwing Lane

Just Outside of Downtown

- SCOTT FAMILY AMAZEUM
1009 Museum Way
- CRYSTAL BRIDGES
MUSEUM OF AMERICAN ART
600 Museum Way



Created by Artspace with funding from Walton Family Foundation

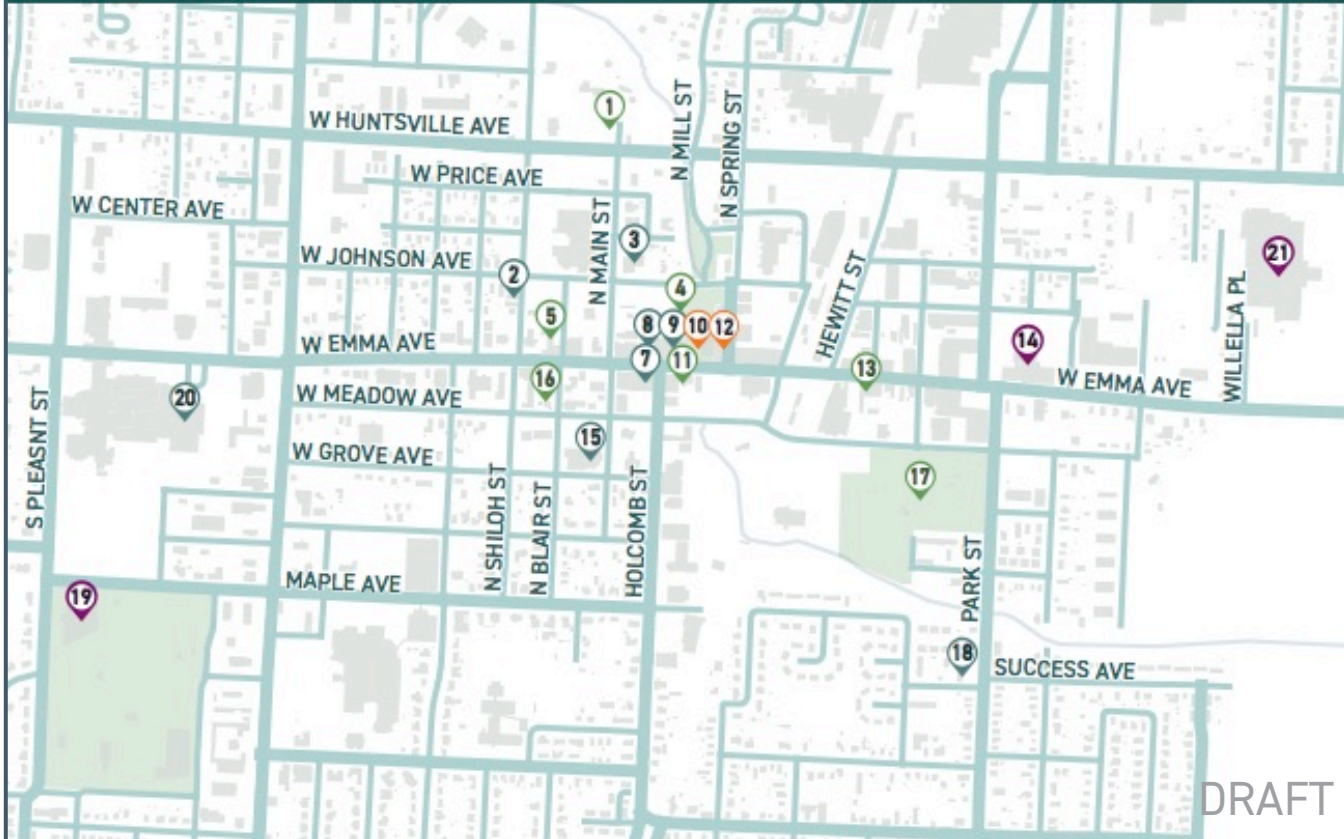
DRAFT

Downtown Springdale Arkansas

Creative Economy Map

- Arts Organization/ Creative Business
- Other Creative Space
- Fairs and Festivals
- Arts Education

Flip over for more info!



DRAFT

Downtown Springdale Arkansas

Creative Economy Map

- Arts Organization/ Creative Business
- Other Creative Space
- Fairs and Festivals
- Arts Education

DRAFT

ARTS ORGANIZATIONS/ CREATIVE BUSINESS

- 2 PERRODIN STUDIOS
126 N. Shiloh Street
- 3 SHILOH MUSEUM
118 W. Johnson Avenue
- 7 1 SEVENTEEN CREATE
308 W. Emma Avenue
- 8 SHELBY LYNN'S CAKE SHOPPE
118 W. Emma Avenue
- 9 DOWNTOWN SPRINGDALE ALLIANCE
110 W. Emma Avenue
- 15 ARTS CENTER OF THE OZARKS
214 S. Main Street
- 16 PERRODIN SUPPLY CO.
505 Success Avenue
- 20 OZARK MOUNTAINS BRITISH BRASS BAND
101 S. Pleasant Street

OTHER CREATIVE SPACE

- 1 MAGNOLIA GARDENS
501 N. Main Street
- 4 TRAILSIDE COFFEE COMPANY
101 W. Johnson Avenue Suite B
- 5 THE APOLLO ON EMMA
308 W. Emma Avenue
- 11 EMMA AVENUE BAR AND TAP
111 E. Emma Street
- 13 BLACK APPLE CROSSING
321 E. Emma Avenue
- 16 SIRE BOUTIQUE
106 S. Blair Street
- 17 LUTHER GEORGE PARK
300 Park Street

ARTS EDUCATION

- 14 STATION: TEEN ACTION AND SUPPORT CENTER
610 B E. Emma Avenue
- 19 SPRINGDALE PUBLIC LIBRARY
405 S. Pleasant Street
- 21 THE JONES CENTER
922 E. Emma Avenue

FAIRS AND FESTIVALS

- 10 SHILOH SQUARE
308 W. Emma Avenue
- 12 LITTLE CRAFT SHOW
106 E. Emma Avenue



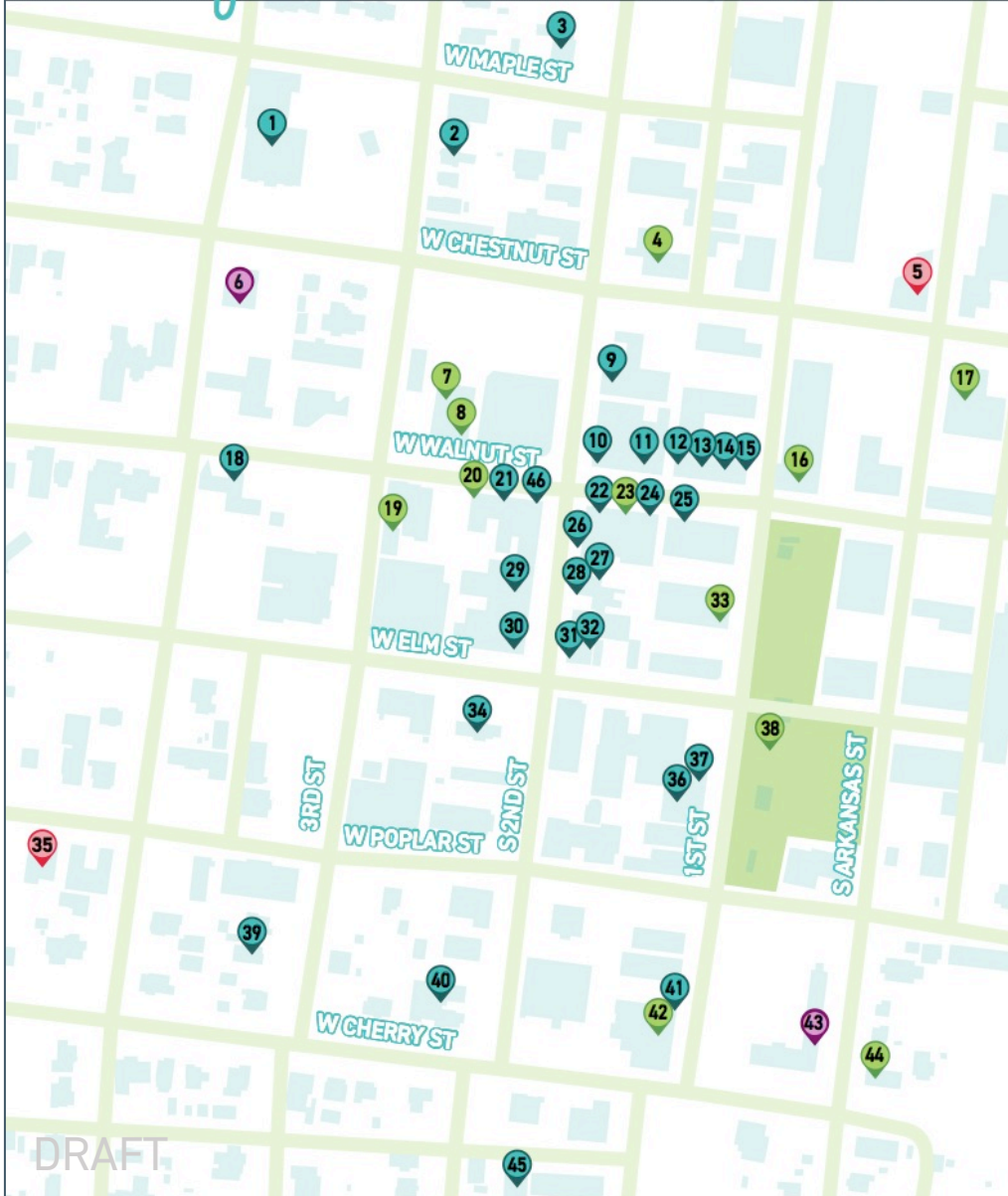
Rogers Arkansas

Downtown
Arkansas

Creative Economy Map

- Arts Organization/ Creative Business
- Arts Education
- Other Creative Space
- Fairs and Festivals

FLIP OVER FOR
MORE INFO!



DRAFT

Rogers Arkansas

Downtown
Arkansas

Creative Economy Map

- Arts Organization/ Creative Business
- Arts Education
- Other Creative Space
- Fairs and Festivals

ARTS ORGANIZATION/ CREATIVE BUSINESS

- 1** MAIN STREET ROGERS
301 W. Chestnut Street
- 2** THE FRAME SHOP
215 N. 3rd Street
- 3** STUDIO 300 NWA
301 W. Chestnut Street
- 9** WHITE RIVER HOUSE AND HOME
111 N. 2nd Street
- 10** ROGERS EXPERIMENTAL HOUSE
121 W. Walnut Street
- 11** WHITES JEWELRY & COIN
115 W. Walnut Street
- 12** RUSTY CHAIR
109 W. Walnut Street
- 13** DANDY ROLL
107 W. Walnut Street
- 14** MISS JUDY'S WISTERIA LANE
103 W. Walnut Street
- 15** THE DOTTED PIG
101 W. Walnut Street
- 18** PALMER VIOLIN SHOP
314 W. Walnut Street
- 21** GOLDEN'S DESIGNER JEWELRY
206 W. Walnut Street
- 21** AVENUE DESIGN COMPANY
124 W. Walnut Street
- 24** MOLLIE LOVE
116 W. Walnut Street
- 25** DOTTED PIG TOO
110 W. Walnut Street
- 26** ANIME CAFE
111 S. 2nd Street
- 27** DOWNTOWN ROGERS
COOKING STUDIO
113 S. 2nd Street

- 28** ED COOLEY "WHITE
RIVER" GALLERY
115 S. 2nd Street
- 29** ARKANSAS PUBLIC THEATER
116 S. 2nd Street
- 30** KIRBY'S KUPCAKES
128 S. 2nd Street
- 31** THE SAVVY SHOPPER
121 S. 2nd Street
- 32** BODYLOVE NATURALS
123 W. Elm Street
- 34** BOD HIGH PRODUCTIONS
206 S. 2nd Street, Suite D
- 36** THREADS 3FOURTEEN
216 S. 1st Street
- 37** ALEXANDER BAKING COMPANY
210 S. 1st Street
- 39** ECOLOGICAL DESIGN GROUP
314 S. 3rd Street
- 40** ROGERS HISTORICAL MUSEUM
322 S. 2nd Street
- 41** RESOURCE DESIGN AND
GRAPHIC DESIGN
316 S. 1st Street
- 45** PRINTNOVA
112 W. Cypress Street
- 46** DAISY AIR GUN MUSEUM
202 W. Walnut Street

ARTS EDUCATION

- 5** BALLET WESTSIDE
101 E. Chestnut Street #1
- 35** ARKANSAS ARTS ACADEMY
HIGH SCHOOL
506 W. Poplar Street

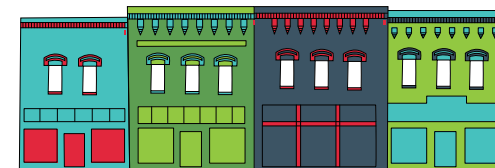
OTHER CREATIVE SPACE

- 4** HAVANA GRILL
301 W. Chestnut Street
- 7** HONEYCOMB KITCHEN SHOP
203 N. 2nd Street
- 8** FRESH HARVEST
211 W. Walnut Street
- 19** HAPA'S HAWAIIAN BAR AND GRILL
105 S. 3rd Street
- 16** 3 CENTS AN ACRE
DOUGH'P
FOREMAN CRAFT COCKTAIL
HEIRLOOM
ONYX COFFEE LAB
YEYO'S
101 E. Walnut Street
- 17** OZARK BEER COMPANY
109 N. Arkansas Street
- 20** BRICK STREET BREWS
208 W. Walnut Street
- 23** HARK AND HERALD CO.
120 W. Walnut Street
- 33** THE GATHERING IN ROGERS
116 S. 1st Street
- 38** FRISCO PARK REVAMP (COMING SOON)
200 S. 1st Street
- 42** GPP BIKE SHOP
318 S. 1st Street
- 44** PHAT TIRE BIKE SHOP
321 S. Arkansas Street

FAIRS AND FESTIVALS

- 6** ANNUAL FRISCO FESTIVAL
113 N. 4th Street
- 43** DOWNTOWN ROGERS
FARMERS MARKET
101 E. Cherry Street

DRAFT



Created by Artspace with
funding from Walton
Family Foundation



- ### PERFORMING ARTS VENUE
- 1 GEORGE'S MAJESTIC LOUNGE
 - 17 BACKSPACE
 - 26 UARK - GLOBAL CAMPUS THEATER
 - 27 STAGE 18
 - 43 THE TINY HOUSE
 - 44 BUD WALTON ARENA
 - 45 BARNHILL ARENA
 - 48 STUDIO 404
 - 49 UARK - CHI OMEGA GREEK THEATRE
 - 52 UARK - UNIVERSITY THEATRE
 - 53 UNIVERSITY OF ARKANSAS VENUES
- ### ARTS EDUCATION
- 2 UARK - FINE ARTS CENTER GALLERY
 - 6 ART FEEDS
 - 18 UARK - SCULPTURE STUDIO
 - 25 STARTUP JUNKIE
 - 25 PRYOR CENTER
 - 33A FAYETTEVILLE PUBLIC LIBRARY EXPANSION
 - 33B FAYETTEVILLE PUBLIC LIBRARY
 - 37 YVONNE RICHARDSON CENTER
 - 41 THE ART EXPERIENCE, INC.
 - 47 SUZUKI MUSIC SCHOOL
 - 50 UNIVERSITY OF ARKANSAS LIBRARY
 - 51 UARK - COMMUNITY MUSIC SCHOOL (MUSIC BUILDING)
 - 54 UARK - SCHOOL OF ART
- ### FAIRS AND FESTIVALS
- 3 ARTOSPHERE
 - 12 BLOCK STREET BLOCK PARTY
 - 19 FAYETTEVILLE FIRST THURSDAY
 - 26 FAYETTEVILLE FILM FESTIVAL
 - 29 THE LITTLE CRAFT SHOW
 - 29 ROOTS FESTIVAL
 - 34 HOLIDAY ART SALE
 - BIKES BLUES & BBQ (various locations)
- ### ARTIST STUDIOS
- 24 FENIX ARTISTS COOPERATIVE
 - 28 KATHY THOMPSON STUDIO
 - 35 TRAILSIDE VILLAGE ARTIST STUDIOS
 - Dylan Dunes Digital Artist
 - Billy Shane Graphic Designer
 - Trisha Gutting - Upcycle artist
 - Kat Wilson Studio
 - MFA Gallery
 - 40 HEARTWOOD GALLERY
 - 42 MATT MILLER/OCTAVIO LOGO STUDIOS
- ### ARTS ORGANIZATION/CREATIVE BUSINESS
- 4 DICKSON STREET BOOKSHOP
 - 5 FAYETTECHILL
 - 5 NIGHTBIRD BOOKS
 - 7 WASHINGTON COUNTY HISTORICAL SOCIETY INC
 - 7 HEADQUARTERS HOUSE MUSEUM
 - 8 SYMPHONY OF NORTHWEST ARKANSAS (SONA)
 - 9 THE DEPOT
 - 10 MARLON BLACKWELL ARCHITECTS
 - 11 WORLD TREASURES
 - 11 MAYBELL MUSIC
 - 13 DARK STAR VISUALS
 - 14 CENTER STREET MERCANTILE
 - 15 THEATRE SQUARED
 - 16 NADINE BAUM STUDIOS/NWA CREATIVE COMMUNITY CENTER
 - 20 COSMIC COWBOY STUDIOS
 - 21 HOUNDSTOOTH CLOTHING CO.
 - 22 BLOCK STREET RECORDS
 - 23 SHINDIG PAPERIE
 - 25 SUGAR ART GALLERY
 - 27 OPEN MOUTH
 - 29 FAYETTEVILLE TOWN CENTER
 - 30 NWA FAB LAB
 - 30 BUZZ EVENT PLANNING AND DESIGN
 - 31 RIFFRAFF
 - 32 ART VENTURES
 - 36 FAYETTEVILLE PUBLIC ACCESS TELEVISION
 - 38 LOCAL COLOR STUDIO GALLERY
 - 39 QUICKTOWN FAYETTEVILLE
 - 41 LALALAND GALLERY
 - 46 CLINTON HOUSE MUSEUM
- Created by Artspace with funding from Walton Family Foundation

DRAFT

HOW CAN WE HELP?

- Contact your local elected officials and other leaders
- Help with continued outreach – social media and more
- Attend Council meetings when Artspace is on the agenda
- Your ideas?





QUESTIONS?

artspace