



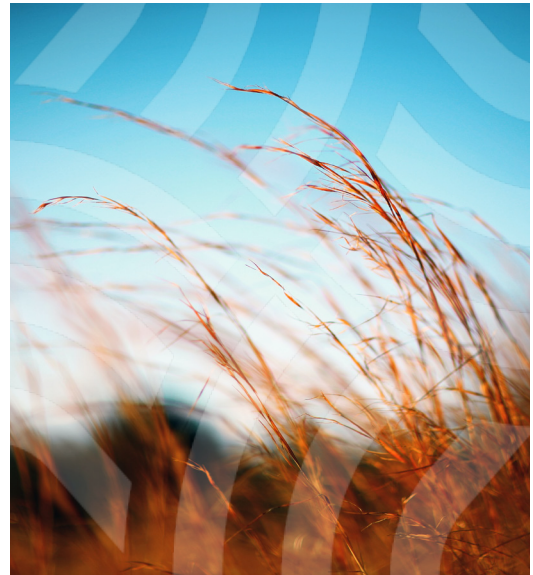
PATHWAYS

A NATIVE SPACE INITIATIVE

Program Overview

Artspace's Pathways: A Native Space Initiative is a pilot program designed to help advance the planning of arts and cultural spaces in Native American communities - which serve as a necessary form of infrastructure to sustain Indigenous artistic and cultural heritage.

Artspace has developed this pilot program to integrate our 40+ years of experience in real estate development, financing, fundraising, and facilities management into the Pathways Development and Planning Tools curriculum. A cohort of selected Native American communities will work with Artspace to develop and implement strategies to support the development and sustainability of arts and cultural spaces.



Cohort Structure

Through an application and review process Artspace will invite a cohort of 10 Native arts and cultural organizations made up of 2–3 members of the organization and community to participate in the 12-month cohort.

The Pathways cohort curriculum will include:

- monthly virtual sessions featuring experts in the areas related to the curriculum,
- individualized technical assistance from Artspace staff and consultants on a range of topics,
- one-on-one consultation,
- peer exchanges and review,
- cross-cohort learning interactions.

Chromebooks will be gifted to all cohort members. At the program's conclusion, each cohort organization that completes all program work receives a planning stipend of \$4,000.

Organization Eligibility Criteria

To be eligible for the Pathways Program, Native American arts or cultural organizations must meet the primary criteria:

- Be within one of the following locations: Alaska, Arizona, British Columbia, Idaho, Minnesota, Montana, New Mexico, North Dakota, Oregon, Southern California, South Dakota, Washington, or Wisconsin; and
- Have programming and a dedicated budget to support Native arts and culture; and
- Have been providing arts and cultural programming for at least three years



PATHWAYS

A NATIVE SPACE INITIATIVE

Program Outcomes

Leadership: Develop an effective project management plan to advance projects efficiently.

Storytelling: Confidently communicate to stakeholders the project through construction and into the operations phase.

Space Plan: Develop a space plan appropriate for cultural and artistic practices with influences centered on community values.

Cohort Overview

- Real estate development training
- A wide array of planning tools and templates
- Personalized one-on-one coaching
- Technical assistance from recognized knowledge experts
- A network of peers among participating Native arts and culture leadership
- Introductions to real estate professionals throughout the country

Special Acknowledgment

The influence that First Peoples Fund and Lakota Funds have had on Artspace has been instrumental in its work with diverse Native American organizations and Native communities looking for assistance with their space goals. Artspace recognizes First Peoples Fund and Lakota Funds as thought leaders in creating social and economic change by putting artists and culture bearers at the center of community development. It is with deep gratitude to First Peoples Fund and Lakota Funds that Artspace has been welcomed into this inspiring work in honoring the *Collective Spirit*® of the First Peoples of this nation.

Submitting Your Application

The online application portal opens on **Monday, September 19, 2022**. The online portal is accessible through www.artspace.org/pathways. Applications are due by **Wednesday, November 2, 2022 at 5 pm CST**.

Key Contact

Jeremy Staab
Program Manager
712-635-4768
jeremy.staab@artspace.org

Artspace's mission is to create, foster, and preserve affordable and sustainable spaces for artists and arts organizations. We work with organizations and municipalities to plan the spaces they need to deliver programs and services to their communities. Artspace combines the tools of real estate with an understanding of the creative sector to provide technical assistance, feasibility and market research, and coaching services to assist arts and cultural organizations with their unique space initiatives. Whether it is a mixed-use development or a long-term lease, we help our clients create that are sustainable, affordable, and equitable spaces.



PATHWAYS
A NATIVE SPACE INITIATIVE

Artspace Projects, Inc
250 Third Ave North
Suite 400
Minneapolis, MN 55401

Website artspace.org/pathways
Phone 612 / 333 / 9012
Fax 612 / 333 / 9089